

CONVERTING LOCAL RAW MATERIALS INTO EXPORTS

Established in 1957 as a manufacturing concern in Nakuru, in the Rift Valley by the late Mr. J. K. Kariuki. It produces a wide range of products ready for export to other countries.

Formed in 1957 as a manufacturing concern in Nakuru, in the Rift Valley by the late Mr. J. K. Kariuki. It produces a wide range of products ready for export to other countries.

Formed in 1957 as a manufacturing concern in Nakuru, in the Rift Valley by the late Mr. J. K. Kariuki. It produces a wide range of products ready for export to other countries.

Formed in 1957 as a manufacturing concern in Nakuru, in the Rift Valley by the late Mr. J. K. Kariuki. It produces a wide range of products ready for export to other countries.

Formed in 1957 as a manufacturing concern in Nakuru, in the Rift Valley by the late Mr. J. K. Kariuki. It produces a wide range of products ready for export to other countries.

"Zebra" insect-repellent cream and towellettes are well established products.

A new line just coming out of research stage on to the market is a pyrethrum-impregnated wooden flake, or chip, for use in thermal vapourisers.

Laboratory tests have shown the "Flower" flake to be at least as effective as imported synthetic-insecticide-based mats which are all the public has had available in Kenya up to now and indications are that the locally made "Flower" flakes should be cheaper as well.

Other KAPI products are incense sticks, Kenya vast bamboo forests provide the basic material, and other ingredients are essential oils, resins and gums which are combined to make a selection of perfumed "joss sticks". Some similar to Indian "aggarbattis" but most are typically Kenyan in odour. "Sunbird" and "Flower of Africa" are among the variety of fragrances to try.

EXPORT SALES

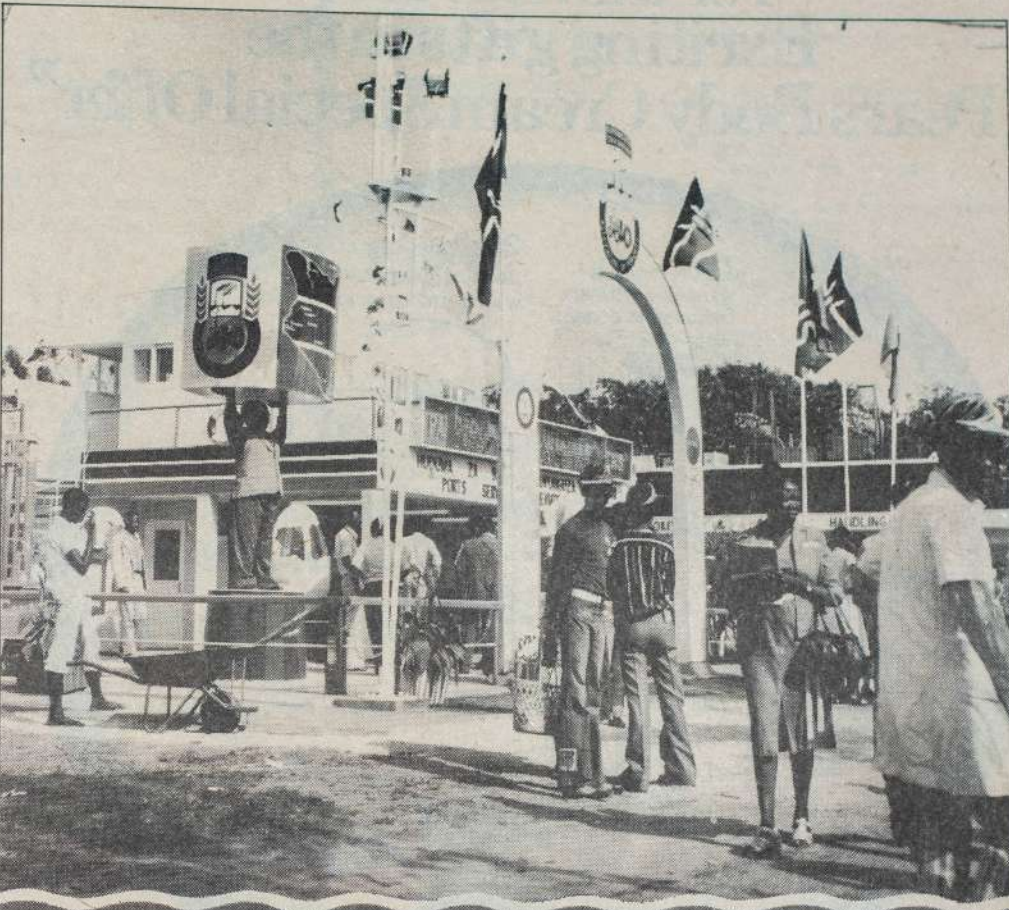
KAPI has a permanent labour force of 72, often swelling for seasonal periods to 150, especially when making for export contracts.

Sadly, the future of export sales has become very uncertain, following the Budget's scrapping of the Export Compensation scheme and KAPI, like all other exporters of manufactured goods is anxiously waiting to see what government proposes to put in its stead.



MOMBASA Mayor Councillor Rajah Sumba has toured the Jomo Kenyatta Show Ground where he was greatly impressed with the progress of the work and commended the show committee for its tireless, selfless services rendered in order to make this year's show the best ever held at the coast.

Mayor Rajah Sumba is seen looking at some of the maize grown at the Ministry of Agriculture demonstration plot. He is flanked by the Mombasa Show's deputy committee chairman, Mr. Brown Ondengo right, and some of the councillors and show officials.



MOMBASA SHOW BARGAINS

from Colgate-Palmolive at Shamash Bros. Stand.

Buy 3 Groomate for 20/- SAVE 6/70

Buy any 3 Colgate-Palmolive products and get a FREE sta-soft large (500 ml) worth 17/50

SUPERSAVINGS

GALLERY GHALIA LIMITED

Dealer in:
Chandeliers and Wall Brackets,
Single Light & Dining room pulleys
Lamps & Shades
Antiques

Rex House
Moi Avenue
MOMBASA

Tel: 312886
P. O. Box 80654

Orders for Lampshades taken to your specifications.

•KPA /KCHS previous exhibition at Mombasa Show



Kenya Ports Authority
P.O. Box 95009,
MOMBASA, KENYA
Tel: 312211-21211
Tel: 21243 "BANDARI"
Grams: "Kenports"



Office of the Managing Director,
Kenya Cargo Handling Services Ltd.
P.O. Box 95187
MOMBASA, KENYA
Telephone: 25955, Mombasa
Telegraphic Address: "HYDRA"

We serve the needs of the Nation

Mombasa - Kenya's vital link with the world's market.

Kenya Ports Authority, also serve Uganda, Rwanda, Burundi, Eastern Zaire and Southern Sudan.

With facilities that include 16 deep water berths, adequate anchorage, oil jetties and a modern container terminal.