

BIG FIVE
tours and safaris limited.
"BIG FIVE" People who Care
P.O. Box 10361, Kenyatta Avenue,
Nairobi. Tel: 29803/28352
Telex: 23066, Fax 337966, Cable: BIGFIVE
NAIROBI
Armbalal House, Nkrumah Road,
P.O. Box 86992, Tel: 311406/311524
Telex: 21252 BIGFIVE, MOMBASA

KENYA

BIG FIVE
tours and safaris limited.
"BIG FIVE"
People who Care
• HOTEL AND LODGE
BOOKINGS
• GROUP TRAVEL
• CAR HIRE
• BEACH HOLIDAYS

MEMBER N.P.A. EAST AFRICA G.P.O. REGISTERED NEWSPAPER

Coastweek

No. 1247B November 28 - December 2, 1989. ■ KENYA ■ TANZANIA ■ SEYCHELLES.



LEOPARD in the Taita Hills.

PHOTO - DINO SASSI. COURTESY KENYA STATIONERS LTD. ALSO AVAILABLE AS POSTCARDS THROUGHOUT KENYA.



RHINOCEROS in Meru Park.

PHOTO - DINO SASSI. COURTESY KENYA STATIONERS LTD. ALSO AVAILABLE AS POSTCARDS THROUGHOUT KENYA.



ZEBRA at a Tsavo waterhole.

PHOTO - DINO SASSI. COURTESY KENYA STATIONERS LTD. ALSO AVAILABLE AS POSTCARDS THROUGHOUT KENYA.

WELCOME TO KENYA

Coastweek
Special Issue
flown to London
courtesy of
Kenya Airways
The pride
of Africa



SUNSHINE
— **SAFARI**

New Kenyan car hire company committed to international standards

For reservations phone Express Kenya:
Nairobi 334722/3/4/5/6. Mombasa 312461.



Europcar
Car Rental

INSIDE

LATEST ON TOURISM PROGRESS
.....
'Game-Viewing In A Balloon Safari ...'
.....
AND MUCH MORE ...

KENYA - LAND OF CONTRAST

THE TOP Kenyan hotels - Nairobi Serena, and Serena Beach - have joined the elite of the world's hospitality industry with their admission to The Leading Hotels of the World.

This prestigious organisation, which has its headquarters in New York, has long been recognised as being the most influential marketing group of international hotels in the world.

Established in 1928, it presently comprises just over 200 hotels, offering the finest accommodation and services available.

Commenting on the admission of the Serena hotels, the Serena Group's chief executive, Mr T.I.G. Barrasford, said: "We regard it as a great honour, not just for Serena, but for Kenyan tourism

SERENA COMPLETE A MAJOR REFURBISHMENT PROGRAMME

in general. It is recognition of the high standards that we have achieved in the local hotel industry".

Only five other establishments in Africa are members of The Leading Hotels of the World. These are Nairobi's famous Norfolk Hotel, plus two each in Morocco and Egypt.

Other member hotels include The Savoy and Claridges in London, The Gleneagles Hotel in Scotland, The George V in Paris,

and The Pierre in New York.

The entry of Serena into this organisation comes at a significant time for the local group which has a distinction of being Kenya's only purpose-built hospitality network with the Nairobi and Mombasa hotels and lodges in Samburu, Amboseli and Masai Mara offering a complete range of tourism facilities.

The Serena group is today an integral part of the country's dynamic tourist industry, and

very much in the vanguard of overseas marketing of Kenya as a holiday, conference and convention destination.

PREMIER HOTEL

Following a decade of quiet success, Serena has recently undertaken a major programme of rehabilitation to position itself as the premier hotel and lodge operator in Kenya.

This is the most visible example of this is the massive rehabilitation

programme at Nairobi Serena at a cost of over Shs. 120 million.

Work will also begin in April on enlarging and improving the existing rooms at the Serena Beach and adding 50 new sea-front rooms (see separate stories)

Requirements for membership in The Leading Hotels of the World indicate that a hotel must meet the highest level of achievement in service, physical structure, location, decor, management, cuisine and all

other aspects of guest comfort.

Application from hotels wishing to join are carefully screened by the organisation's Executive Committee and only the most eminent are accepted, after a most thorough on-site inspection by a team from the body's headquarters.

Earlier this year the inspectors visited the Nairobi Serena and Serena Beach to examine all aspects of the hotel's facilities and service before flying back to New York.

NAIROBI SERENA

The aim of the Shs. 120 million refurbishment programme at Nairobi Serena was simple: to establish it as the leading hotel in Kenya.

The transformation programme is now almost complete with a new-look lobby and reception area, a new residents' lounge, two impressive new restaurants, completely redesigned banqueting facilities, Nairobi's most modern swimming pool and a luxurious health and fitness centre.

During the rehabilitation work, much attention has been paid to the decor of all the new facilities with each area boasting a unique theme.

Maisha, the health and fitness studio, for example, has a pronounced Mediterranean feel to it, while Cafe Maghreb exudes a casual moorish charm with its richly finished interior.

As earlier indicated, full advantage has been taken of the hotel's greatest assets - its lush gardens and open spaces so close to the city centre.

The panoramic views of downtown Nairobi, particularly in the early evenings, are unmatched from the terrace of Mandhari Restaurant.

A 50-foot Kisii stone carving by Jony Waite dominates the Mandhari. The carving, which takes up an entire wall, provides the theme of sophisticated surroundings, fine cuisine and good wines.

DISPLAY UNIT

With a capacity of 114-80 inside and 34 on the much sought-after balcony - the Mandhari offers what executive training chef Felix Huwyler calls "natural cuisine" which he describes as emphasising the natural flavours and tastes of food and retaining the natural appearances and colours of dishes.

A splendid central display unit is located near the entrance to the restaurant - showing off the freshest produce: fruits and vegetables, a selection of different cuts of meat; and the catch of the day.

The high level of presentation is passed through the excellent cookery, cutlery and glassware - adding a unique touch of elegance to the operation.

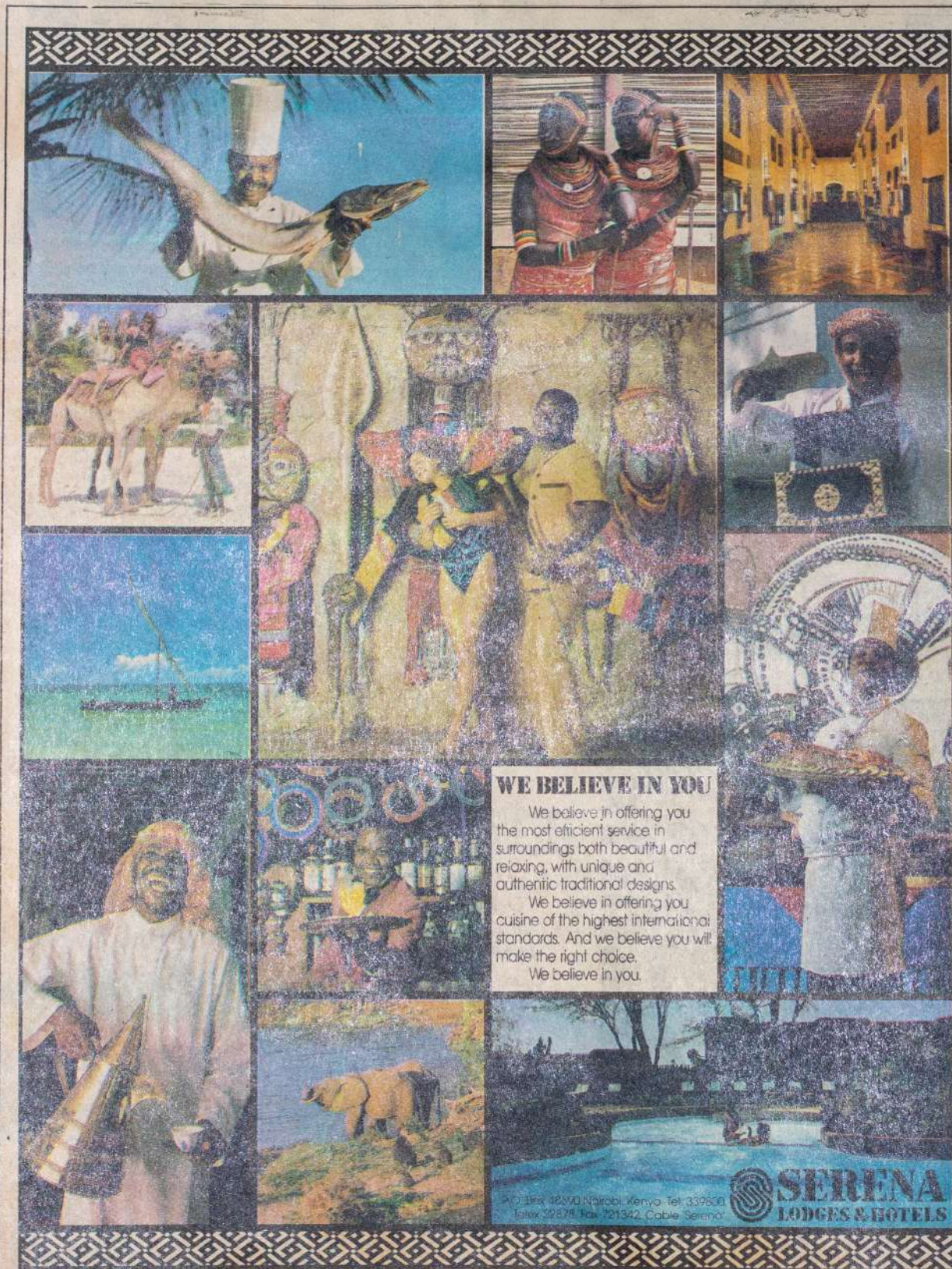
For an informal meal or a quick cappuccino, there are few places to beat Cafe Maghreb which is fast becoming the "trendy" place to meet especially with the opportunity of alfresco dining by the most stunning swimming pool in Kenya. The restaurant accommodates 120, with an additional 40 seats on the piazza-style terrace leading to Maisha.

SWEET BUFFET

Maghreb offers an extensive range of items of dishes to suit the weight-watcher and big eaters alike.

The a la carte menu is so extensive that over a dozen meals can be composed without repeating a single item. The busy executive can take advantage of the daily offer from the carving trolley (with a different joint daily), and a selection of desserts from the sweet buffet and be out of the restaurant in little over half an hour. A very tempting proposition - especially with the ample parking space at the hotel.

As can be expected from a restaurant boasting a Moroccan theme, coffee plays an important part in the operation; the scent of freshly-roasted beans fills the air, and in the corner of the restaurant a stall-like dispensing area which is a hive of activity as waiters collect espresso coffees.



WE BELIEVE IN YOU

We believe in offering you the most efficient service in surroundings both beautiful and relaxing, with unique and authentic traditional designs.

We believe in offering you cuisine of the highest international standards. And we believe you will make the right choice.

We believe in you.

Plot 423/40 Nairobi Kenya Tel: 339860
 Telex: 22878 Fax: 721342 Cable: Serena

SERENA
 LODGES & HOTELS

KENYA'S TOURISM MINISTER Hon. KATANA NGALA

"We Have Enjoyed A Very Successful Tourist Year"

AS WE come together at Olympia, London, to attend the ninth WTM Congress this year, I am happy to announce that in 1988, Kenya had a very successful year in tourism.

Throughout the year, we received and hosted 635,000 visitors from all over the world. Of this number, over 90,000 came from the United Kingdom.

Your many friends in Kenya wish to express their sincere thanks to you for your support and the confidence that you have continued to show in our country.

We know we can count on your past support for our future success. In turn we promise you our fullest commitment in sustaining the Kenyan tourism



product to the highest standards possible.

Kenya hoteliers, tour operators, and travel agents are all committed to maintaining the highest international standards to ensure that your clients have a holiday of their lifetime.

EXPANDING MARKETS

Our products continue to get better and better and are expanding to meet the exacting needs of today's holiday and business travellers.

This expansion has necessitated the creation of new tourist circuits, as well as the provision of additional lodges, beach hotels and other related facilities, thereby reinforcing the commitment of our country to the success of the tourism industry for our mutual benefit.

Kenya continues to make concerted efforts to conserve wildlife which is one of the country's main tourist attractions. The ban on ivory trade initiated by Kenya and now supported by many countries, including the United Kingdom, is a conservation step in the right direction.

It is a great achievement which will go along way in ensuring the survival of the endangered species.

I appeal to those of you who are not selling travel to Kenya to start doing so, for I believe Kenya as a tourist destination will make a lot of business sense to everyone.

Yours sincerely,
Hon. N. Katana Ngala E.G.H., M.P.
Minister for Tourism and Wildlife

BRITISH HIGH COMMISSIONER TO KENYA:

"A Beautiful Country!"

Message from Sir John Johnson KCMG British High Commissioner to Kenya

It is a great pleasure again this year to say a few words about Kenya for the special issue of COASTWEEK to mark the 1989 World Travel Market.

Having had the privilege of knowing Kenya for over 30 years, I have watched with respect and affection the country's achievements during that time.

It is a particular pleasure for me to serve as British High Commissioner because of the warmth and friendship between our two countries, and because of the common understanding and outlook born of our long association.

No one who comes to Kenya from Britain can fail to be aware of this closeness.

Visitors to Kenya need no reminding of the unique attractions of Kenya. I have a personal preference for Kenya's magnificent mountains.

But there is much more besides: the grandeur of the Rift Valley, the fascination of the many National Parks and their wildlife, the beauty of the Coast.

disappointed.



• SIR JOHN JOHNSON

DIANI REEF GRANDHOTEL

One of the world's best

One of the world's best resort complexes is located right here on the Kenya coast. The Diani Reef Grand Hotel offers the ultimate in holiday living, recreation and leisure.

Situated in 130,000 sq.m of beautifully landscaped grounds, fronting on 300 metres of palm-fringed silver sand, it is a veritable tropical paradise!

Accommodation consists of 149 superior and 153 deluxe rooms. All rooms and suites are centrally air conditioned with private balconies facing the sea. Guests have the choice of dining in 7 different speciality Restaurants at no extra charge on fullboard or halfboard mealplan.

It's the holiday experience of a lifetime.

Diani Reef Grand Hotel is a world apart!

Diani Reef Grand Hotel
P.O. Box 35 Ukanda Kenya
Tel: 01261-2723
Telex: 21078/DIREEF
Fax: 01261-2196

Nairobi Reservation Office
Somneth Kenya Ltd.
28th Century Plaza
P.O. Box 61753 Nairobi
Tel: 25312-2958
Telex: 22499/SOMOTELS

FRIENDLY WELCOMES

And the Kenya tourist industry is second to none in ensuring that visitors to this country enjoy their holidays here in comfort and style.

Those of you who know Kenya well will echo my words. To those of you who have not visited it before, I can only say how much I envy you the opportunity of experiencing its many delights for the first time.

You will be assured of the friendliest of welcomes. And I know you will not be

The HARLEQUIN
restaurant

OPEN EVERY DAY FOR LUNCH AND DINNER

LIVE SEA FOOD

FOR RESERVATIONS: PLEASE TELEPHONE MOMBASA 422373

"SIMPLY THE BEST WAY TO TRAVEL"

A&K

CONFERENCES

SELF-DRIVE

TAILOR-MADE SAFARIS

INCENTIVE TRAVEL

LUXURY CAMPING SAFARIS

REGULAR DEPARTURES

NAIROBI: ABERCROMBIE & KENT LTD., 6/7TH FLOOR, BRUCE HOUSE, PO Box 59749, STANDARD STREET, NAIROBI; TEL: 334955; TELEX: 22853 ABKENT KE; FAX: 726414

MOMBASA: ABERCROMBIE & KENT (COAST) LTD, PO BOX 90747, 3RD FLOOR, PALLI HOUSE, NYERERE AVENUE, MOMBASA; TEL: 316539/26932/312469

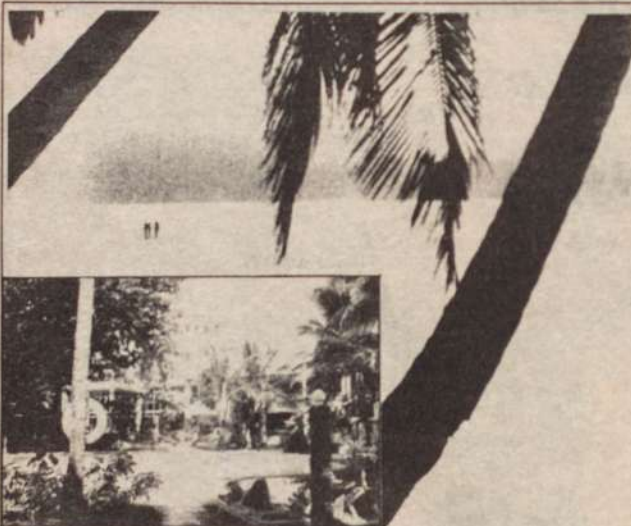
MALINDI: ABERCROMBIE & KENT (COAST) LTD, PO BOX 1072, GOVERNMENT ROAD, MALINDI

Neptune Village

A Hotel of Holiday Resorts Ltd.
P.O. Box 83125, Mombasa
GALU BEACH - South Coast
Tel: (01261)-2350/2353
Fax: (01261)-2354
DIANI — KENYA



Where hospitality is a way of life.

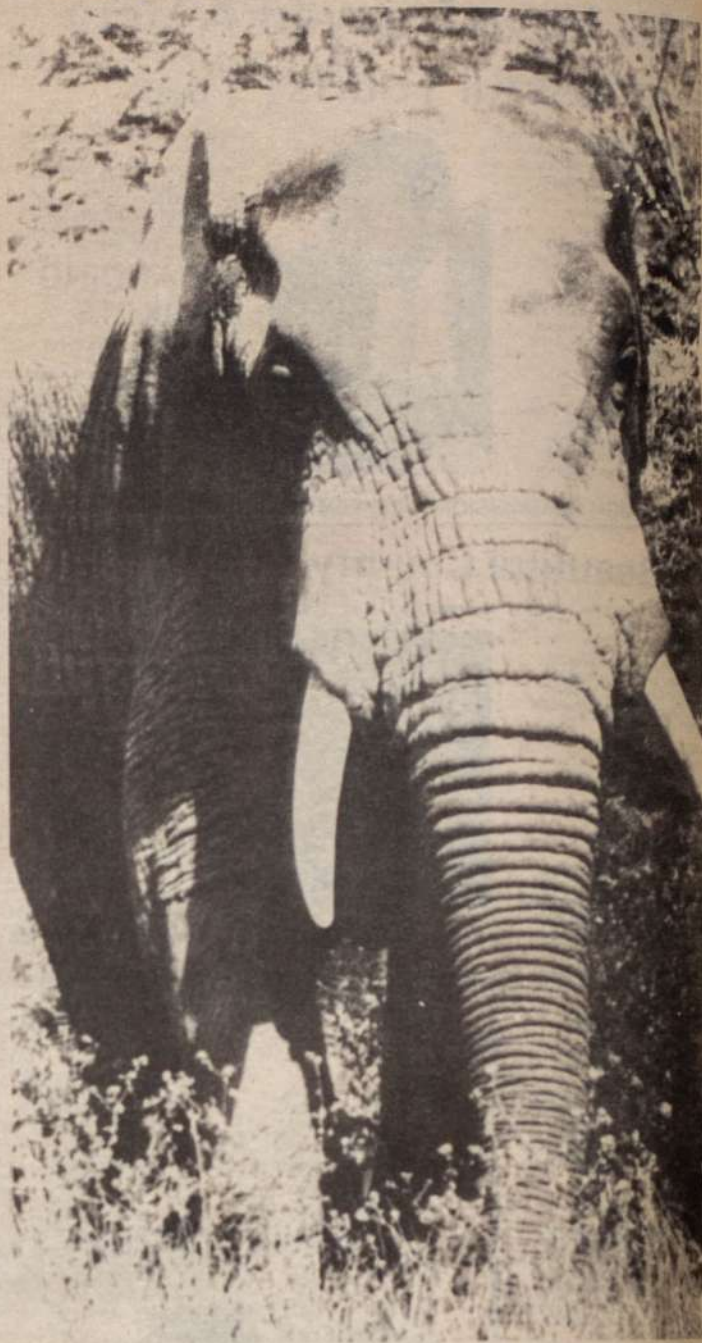


... Welcome to the world of NEPTUNE. . .

NEPTUNE BEACH HOTEL

A Hotel of Holiday Resorts Ltd.
P.O. Box 83125 Mombasa
BAMBURI - North Coast
Tel: (011)-485701-3
Telex: 21386 NEPTUN KE
Fax: (011)-485705

POSING IN THE PARK ...



TAITA HILLS TUSKER seen close up near Hilton's Salt Lick Lodge.

Abercrombie And Kent — The Tour Professionals!

WITH the benefit of 28 years' professional experience in travel behind us, you can't do better either on safari, or on a beach holiday - or indeed, on a combination of both in Kenya, than with Abercrombie and Kent.

Ever since we welcomed our first clients to Kenya in 1962, specialised arrangements and attention to detail have been a hallmark of our services, enabling thousands of travellers over the years, to experience that "holiday of a lifetime".

Our first safaris in Kenya were traditional, tailor-made, luxury tented safaris - and this is still today what we are best known for. These personalised camping safaris are indeed, a unique experience and one of the most flexible, enjoyable and exciting ways to see Africa.

Our camps combine the original, homodie, slightly raffish charm

that characterises a true tented adventure, with all the modern equipment that technology can muster.

Today, with Aunai Kanji running our coast operations, and 18 years of experience behind him, Abercrombie and Kent (Coast) Mombasa and Malindi provide regular departures to all Kenya's national parks and reserves, have a fleet of self-drive cars and can organise any tailor-made safaris.

SAFARIS

We have our own multi-lingual, fully staffed offices in Nairobi, Mombasa and Malindi (as well as a unique network of ground handling offices that extends throughout Africa - and indeed the world). No other tour company in Kenya can boast so widespread a service.

Our programmes have been

specially developed for you and our regular, guaranteed safari departures and excursions have been made to suit all tastes.

We pride ourselves in securing the finest accommodation available, whether it is in our own exclusive safari camps, Kichwa Tembo, in Kenya's magnificent Maasai Mara Game Reserve, or the idyllic Robinson Crusoe coastal resort of Kiwayu. Whichever you choose, you will always be comfortable, as is Abercrombie and Kent's style.

We own an extensive fleet of immaculately maintained minibuses, air-conditioned coaches, four-wheel drive landcruisers and rent-a-car, as well as employing and training the finest driver-guides in the business, to serve as escorts during your stay. All speak fluent English and several speak German, Italian, French and Spanish.

Alliance Hotels Offer Perfect Holidays At The Beach ... Or In The Mountains

THROUGHOUT the years Alliance Hotels have been attracting tourists from all over the world, some now having spent more than 30 enjoyable vacations there.

Such are the popularity of Jadini and Safari Beach Hotels, also Africana Sea Lodge situated 36 kms south of Mombasa Island that they are able to boast of exceeding a 90 per cent room occupancy throughout the year.

Luring guests back again and again is the "good value for money" they receive as well as having a choice of seven different a la carte restaurants in which to enjoy a meal.

Guests at Alliance Hotels can in fact enjoy the facilities for eating, entertainment and sports at any of these three units.

Jadini and Africana are conveniently situated next to each other, while Safari Beach Hotel is just a short walk away along the beautiful Diani Beach which is cleaned daily.

In the evening a "shuttle bus" service operates between them.

Alliance Hotels offer a host of epicurean delights in their first class grill rooms, and there are also al-fresco lobster bars, Bistro, Brasserie, popular Discotheques, Italian Ice Cream Parlours and many attractive well stocked bars.

Sports facilities include windsurfing and diving schools, tennis courts with Sodium helium lights, squash and volleyball courts, also a football ground.

The well-equipped Mistral Windsurfing Schools at these hotels also offer more specialised equipment for the more advanced and professional windsurfer.

At Jadini and Safari Beach Hotels is "The Crab" a very professionally run diving school with experienced bi-lingual P.A.D.I. instructors.

Catamarans are available for sailing and arrangements can be made at the hotel for deep sea fishing.

Jadini and Safari Beach Hotels also offer air-conditioned conference facilities close to the beach. Both make ideal venues for a combined conference and "mini" holiday.

DANCERS, MUSIC, VIDEO & ACROBATS

All three hotels offer entertainment each night of the week including traditional dancers, acrobats, live bands and video films. They have hopping arcades with trendy boutiques, guest services and a UTC office where land and air safaris all over Kenya can be booked as well as self-drive hire cars.

A hairdressing salon is at Safari Beach.

The hotel bus is available for trips to Mombasa as well as for transfers to airport or railway station.

Accommodation at the 376-bed Safari Beach Hotel, which include 22 suites, are in attractive one-storeyed rondavels situated in six villages each named after well known game parks in Kenya. In keeping with this

safari theme, a carved wooden animal is affixed to each front door. In fact, carved animals, of all sizes, are everywhere, both inside and outside the hotel.

The air conditioned rooms are larger than usual with full-size beds, radio, telephone, "mini" bar also bathrooms with bath, separate shower and WC.

At Africana Sea Lodge accommodation is in makuti (palm-frond) roofed rondavels with all "mod-con" including air

by NETA PEAL

conditioning. It is the only hotel on the Kenya coast to have its own chapel which is inter-denominational.

At Jadini, all rooms are air conditioned with telephone and piped music. Most are sea facing.

There are beautiful gardens at all hotels, which include some very old baobab trees.

Also part of the Alliance Hotels group is Naro Moru River Lodge which has for many years specialised as a base for those wishing to climb Mount Kenya by offering mountain climbing and trekking facilities.

Situated 2135 metres in the foothills of Mount Kenya and just 16 kms south of the Equator the Lodge can now also offer trout fishing, bird watching, swimming, a sauna, horse riding, tennis, squash, indoor games and nature walks.

It has undergone a major face-lift and a new complex has been added which is now fully operational. It includes an open dining and BBQ area, bar, sauna, heated swimming pool - the centre of which faces Mount Kenya's highest peak.

There are conference facilities for 60 people and a restaurant offers international cuisine.

Naro Moru River Lodge, with its unrivalled scenery, now has 32 rooms. They include 20 superior and elegantly furnished self-contained rooms with double beds and fire places, also seven self-contained family cottages - the largest of which can sleep seven.

All face the river and command a magnificent view of the mountain.

Alternative accommodation is also available, at very reasonable cost, to mountain climbers in bunkhouses fitted with beds and mattresses, or at good camping sites.

Naro Moru River Lodge has been the best base for mountain climbing parties for many years and has a fleet of four-wheel drive vehicles to take climbers as far as the Meteorological Station at 10,000 ft. It also has a Mountain Equipment Store from where all the specialised gear for ascending Lenana Peak (16,500 ft); Nelian (17,000 ft) and Batian (17,058 ft) can be hired.

En-route, accommodation is offered in log cabins at the Met Station, and at 14,200 ft in the newly constructed Mackinders Camp overlooking the peaks of Mount Kenya.

With its team of expert guides the Lodge offers a wide variety of climbing safaris, nature hikes and educational tours.

However, the two main ways of climbing Mount Kenya from Naro Moru River Lodge is through its "all inclusive, or do it yourself" safaris.

The "All Inclusive" safari depends on the number of days an individual or group may wish to spend climbing the mountain and arrangements can be made accordingly.

The "One Day" safari is for those not necessarily interested in reaching any of the mountain peaks, but are interested in seeing the beautiful scenery and vegetation of an equatorial mountain with its wild animals and birds.

There are also "Three and Four Day" safaris to Mount Kenya by foot. All start with a lift by truck to the Met Station at 10,000 ft.

In the four day safari, one day is spent in the Teleki Valley to see giant heather, Erica Arborea, Tree Groundsell; Cabbage Groundsell and Senelio Brassica



EQUATORIAL ENIGMA — snow-capped Mount Kenya.

PHOTO — COURTESY MINISTRY OF TOURISM AND WILDLIFE

which are dominant in this valley.

The "Five Day" safari circumnavigates Mount Kenya

ALLIANCE HOTELS

The Big Five

KENYA'S FRIENDLY HOTEL GROUP



Naro Moru River Lodge



Jadini Beach Hotel



Africana Sea Lodge

Whether you're after mountains or fishing, business or pleasure, there's an Alliance Hotel for you. Naro Moru River Lodge is the official base for all expeditions up Mount Kenya. In Mombasa town, the air-conditioned luxury and central position of the Castle Hotel make it the ideal base for business. On the south coast, there's nothing to beat our three hotels' choice of restaurants, water sports and entertainment. And don't forget we have excellent conference facilities at all the Big Five.

Alliance Hotels

Alliance Hotels Tel: 330357/337501 Fax 02-339029

Naro Moru River Lodge
Castle Hotel
Safari Beach Hotel
Jadini Beach Hotel
Africana Sea Lodge

SARNA'S International Gems Ltd.

"Dedicated to perfection"

- 18ct & 22ct Jewellery
- Tsavorite
- Tanzanite
- Ruby
- Sapphire
- Aquamarine



Consolidated Hse
Standard Street
P.O. Box 48464
Nairobi
Tel: 336934

OUR GUESTS ENJOY A SPECIAL TYPE OF LUXURY IN KENYA.



HOTEL INTER-CONTINENTAL NAIROBI
P.O. Box 30353, Nairobi Kenya. Tel. (2542) 335550
Tlx: 22631 Fax: 723682 Cable: INHOTELCOR.



HOTEL INTER-CONTINENTAL MOMBASA
P.O. Box 83492, Mombasa Kenya Tel. (25411) 485811
Tlx: 21153 Fax: (011)485437



NAIROBI SAFARI CLUB
P.O. Box 43564, Nairobi Kenya Tel. (2542) 330621
Tlx: 25391 Fax: 331201 Cable: INHOTCLUB.

From the city of Nairobi to the sandy shores of the Indian Ocean, Inter-Continental Hotels have your needs very much in mind. Excellent locations compliment incredible recreational facilities with beautiful swimming pools, dazzling casinos, quiet cocktail



lounges and restaurants for everything from a light snack to a gourmet meal. Alternatively, if your plans call for a conference of 600, a banquet of 400 or a meeting for 20, we're ready with flexible meeting rooms, business service facilities and experienced staff to handle the details for you.

INTER-CONTINENTAL HOTELS

It's where you go when you've arrived.

Africa Division, P.O. Box 30353, Nairobi, Kenya Tel: 335550 Tlx: 22631
Free reservation service available at any Inter-Continental Hotel or through our Global II Worldwide Reservation system and through your travel agent.

INTER-CONTINENTAL More than 100 superb hotels around the world.

ARCHERS' TOURS ARE THE AFRICAN SAFARI EXPERTS ...

ARCHERS Tours and Travels Limited have over 35 years experience in organizing safaris and beach holidays in East Africa for visitors from all over the world.

A spokesman told COASTWEEK "We have a professional multi-lingual staff who are trained in arranging tailor-made safaris to any part of East Africa for the discerning individual and important incentive groups.

"They are at your service to design your exclusive safari, as well as special interest holiday to suit golfers, mountaineers, fishermen and ornithologists, to name a few.

"Archer's has an active IATA travel office, located in the centre of Nairobi, with friendly and efficient staff who will assist you in making travel arrangements on local and international flights.

"Our safaris are arranged using a variety of transport - either by light aircraft; or in chauffeur-driven saloon cars, buses and four-wheel-drive vehicles. Our chauffeurs are fully trained driver-guides with an all-round knowledge of the country, its

people and its wildlife. "With our experience and our flexibility, we are at your service to prepare your ideal safari combination:

- A safari in Kenya, by road or by light aircraft to exclusive luxury camps or lodges in Kenya's wildlife sanctuaries, and by the shimmering lakes along the Rift Valley Floor...
 - A safari in Tanzania to see the wonder of the Ngorongoro Crater and the vastness of the Serengeti plains, or to enjoy the colourful underwater-world in Lagoons off Pemba and Zanzibar the "Spice Island".....
 - A visit to the Mountains of the Moon to trek gorillas, the "Gentle Giants" in lush primeval jungles.....
 - A hop to the Seychelles, the jewels of the Indian Ocean, to see the unique Coco-de-mer Palm.....
- "The choice is yours!"
Archer's Tours and Travels Limited, are members of KATA, KATO, UFTAA and IATA.

KEEP SMILING ...



MAASAI MAIDENS enjoying a lunchtime laugh!

Lamu-Style Architecture At Serena Beach Hotel

WITH its unique Swahili-village setting, Lamu-style architecture and excellent service, Serena Beach has long been recognised as one of Kenya's leading Coast hotels.

Now it is poised to become even better. For Serena management recently announced plans for a major refurbishment of the Shanzu Beach establishment.

Work is scheduled to begin in April to enlarge the existing 120 rooms and add 50 new air-conditioned, sea-front rooms, including two "V.I.P. - style" suites with luxury balconies.

The creation of a central entertainment centre will include enhancement of the existing Fountain Restaurant, poolside snack bar and Makuti Bar, and the beach front Kisima Grill, and provide new bar and restaurant facilities with a spectacular, panoramic view of the Indian Ocean.

Already highly acclaimed for its extensive sports centre which includes facilities for swimming, tennis, squash, mini-golf, scuba diving, waterskiing, windsurfing and deep-sea fishing, Serena will build a new swimming pool and

add two new tennis courts. The hotel is becoming increasingly popular as a setting for a conference with a difference. The meeting room is ideal for smaller, more intimate groups.

When not working, conferencegoers can sit in the shade of palm trees and enjoy the sea breeze or relax with a cold beer or arabica coffee in the air-conditioned bar.

The watersports centre, which is slightly apart from the complex of main buildings and rooms, is a mix of the traditional and high-tech - attractively Swahili architectural renditions accommodating the latest watersporting equipment.

Dhow Tours

Aiming for the highest standards, Serena has contracted Kenya's leading watersports specialists, Kenya Marinas Limited, to operate the centre where fully qualified instructors guide beginners and novices through a variety of activities.

Dhow cruises and a stint on a 42-foot ocean racing yacht can also be arranged.

See world famous
KENYA'S
WILD LIFE



TEL: 25503/25415 DIGO ROAD P.O. BOX 84600 MOMBASA KENYA
**AIR SAFARIS, AIR FREIGHT, AIR AMBULANCE,
AIR CHARTER, AIR PHOTOGRAPHY - AIR TAXI**

Make tracks for



Tsavo Safari Camp

 **Amboseli**
Lodge KENYA

Tsavo East



KILIMANJARO
SAFARI
LODGE
KENYA




KILIMANJARO
SAFARI CLUB

AMBOSELI LODGE
KILIMANJARO SAFARI LODGE
TSAVO SAFARI CAMP

P.O. BOX 30139 NAIROBI, KENYA Telephone: 338888/27136 Telegrams MASAI Telex 22371

VISIT BAMBURI QUARRY NATURE TRAIL
 A man made Eden
 open daily 2 00 5 00 p.m.

BAOBAB FARM LTD
 P.O. Box 90202
 MOMBASA



TURTLE BAY BEACH HOTEL
 WATAMU - KENYA
 (24 KM. SOUTH OF MALINDI)

Your Hotel For Your Family Holiday

- * BEAUTIFUL SWIMMING POOL
- * EXCELLENT CUISINE
- * BARBEQUES BY THE POOL
- * WATERSPORTS, TENNIS, SNOOKER, DISCO etc.
- * PRIVATE BATHROOM AND PRIVATE TERRACE
- * ROOMS WITH SEAVIEW AND AIRCONDITION

Book through your Travel Agent/Tour Operator or Direct at the Hotel.

P.O. BOX 22309, TEL. 21143, TELEX 25434, NAIROBI.
 P.O. BOX 10, TEL. 0122-32622, TELEX 21074, WATAMU.

turtle bay beach hotel



SILVER SPEAR TOURS
 EXPRESS TRAVEL SERVICES

Our services include:

- * Local tours and safaris
- * Hotel and lodge bookings
- * Self-drive and chauffeur driven vehicles
- * Film locations
- * Arranging of conferences
- * Special interest tours

Bruce House, Standard Street, P.O. Box 40433, Nairobi
 Telephone: 334722
 Telex 22274/23270



'Hilton' — Gateway To The National Parks

A LAND of contrasts, where, at the Equator, snow-capped mountains dominate the horizon. Where arid desert and fertile valley support animal and human life, and whose eastern boundary along hundreds of miles of silver sands is the azure Indian Ocean. This is Kenya.

Most of the country's visitors, both businessman and holiday-maker arrive via the capital city and major gateway - Nairobi.

Founded at the turn of the century, Nairobi has grown from a village to a thriving city with a population of one million; most visitors spend a few days here before travelling on to the coast or the national parks.

Capital city and business centres, Nairobi's modern architecture reflects its youth, and striking buildings such as the Kenyatta International Conference Centre and the Cooperative Bank Building dominate the skyline. But Nairobi is not without tradition, and there are many more mature landmarks in the city that make it what it is today.

A wide variety of restaurants and bars give the city its many meeting places, and the best known are in Nairobi's better hotels; the Hilton International Nairobi for example is one which offers dining and dancing in its Amboisell Grill, informal lunches on its poolside terrace and snacks in its Pizzeria or Mara Restaurant.

BEADWORK

The hotel's shopping arcade is another big attraction, for Kenya has much to tempt the bargain hunter. Wood carvings, basketware, beadwork, fabrics - printed and woven and lightweight cotton safari clothes and hide boots satisfy almost every visitor's impulse, although the more adventurous



HILTON LION

will seek out local gemstones and jewellery - another good buy.

Nairobi's other attractions are many and include numerous theatres, cinemas, restaurants and clubs, a casino, and the popular Railway Museum. There's also the National Museum which has a fine collection of mounted butterflies and birds, the Snake Park, with a wide variety of snakes and other reptiles on view, and the famous National Park. In a city suburb not far from the airport visitors can see lions and many other wild animals roaming freely.

WILDLIFE COUNTRY

But most visitors to Kenya who want to see wildlife will head out of the city into the bush for a safari through one of the country's many game reserves.

Some 90 species of animals inhabit the African plains and countless varieties of birds, reptiles and insects. All can be



LOCAL LANDMARK — 'Hilton International' Nairobi.

see in Kenya - most can be seen in any one of the countries well maintained national parks.

One of these is the Tavo National Park, South East of Nairobi just over halfway to Mombasa. Here, near Tavo West at the foot of the Tavo Hills, are two of Kenya's finest game lodges, both operated by Hilton International who also maintain the 28,000 acre private game reserve in which the lodges stand.


Salt Lick Lodge is a group of round, native style huts (but with all modern amenities on the inside), standing on stilts and linked by catwalks to give the best views of the animals coming to drink and wallow in the salty pool. Here is game viewing at its best, and unashamed luxury in the wild.

For those more devoted to total relaxation in a resort atmosphere, Taita Hills Lodge - a scenic 6 mile drive from it's neighbour - offers luxurious accommodation, swimming pool, fine food, local dancing displays and rarest of all pleasure - total peace and quiet in dramatic surroundings. Nearby Lake Jipe provides pleasant boat rides.

Further west is the Indian Ocean with its beautiful beaches and clear seas. At famous resorts like Mombasa and Malindi, and mysterious hideaways where time stands still - Lamu is one - visitors enjoy the natural beauty of the coast, the plentiful fresh seafood and the long hours of sunshine.


WARM WELCOME

Kenya is a country with something for everyone - tourist and businessman alike - and, as tourism is one of Kenya's biggest business, every visitor is made especially welcome.



Lusitania Ltd.
 P.O. BOX 82952 MOMBASA
 TEL 485305/485337

For Deep Sea Fishing Safaris
 -4 FULLY EQUIPPED & LICENCED BOATS



Season: August to April

BOATS

1. BUCCANEER	:	36FT CABIN CRUISER
2. VICKI	:	31FT CABIN CRUISER
3. MAVERICK	:	28FT CATAMARAN
4. RAHA	:	28FT CABIN CRUISER

Even More Luxury At South Coast's Superb Grand Diani Reef Hotel

residences of Kings and Princes in the Middle East, the Limehouse residence of film director, David Lean, and London's famous Savoy Hotel.

Mr Dowling's expertise also ensured that the decor in Le Gourmet restaurant is strictly French.

The hotel has undoubtedly introduced a new dimension in standards of luxury, comfort and service on the Kenya Coast.

arcade

General Manager is Sigi Jogschat with a wealth of experience in the hotel industry who has been in Kenya for 22 years.

The hotel has a shopping arcade and hairdressing salon, also a Guest Relations Desk to help in any way it can.

Bookings can be made at the UTC/Hertz office for self-drive cars and sightseeing tours, as well as trips by air and land to places of interest all over Kenya.

A daily bus service is available into Mombasa.

Diani Reef Grand Hotel is owned by Hotelspan Limited which has three partners - Industrial Development Bank and Sianamara Limited (both of Kenya), also Sonotels UK Limited a daughter company of International Generics.

It is the Rexol Group which is the holding company for the International Generic group of companies which embraces Sonotels Kenya Limited - the management arm of Diani Reef.

investor

The major force and investor behind the inception and development of this hotel is Sir Leon Tamman, Chairman of IG.

Said Mr S. Banin, Managing Director of Sonotels Kenya Limited and Sonotels UK Limited on a recent visit to Kenya "we have probably developed on Kenya's south coast one of the most spectacular resort hotels in the world catering exclusively for an up-market clientele".

From the hotel there are many

places of interest to visit on the south coast which include the Shimba Hills and National Reserve, and ornithologists' paradise in which the rare sable antelope can be found as well as elephant giraffe and leopard.

There is also the Kisiti Mpunguti Marine Park described as like the Gt. Barrier Reef in "miniature". From Shimoni traditional dhows take passengers to this marine park, followed by a seafood lunch on the remote Wasini Island.



BIRD'S EYE VIEW of the splendid 'Grand Diani Reef Hotel' complex on Jadini Beach.

DIANI Reef Grand Hotel is the only one on the Kenya coast to offer a choice of seven restaurants enabling guests to enjoy excitingly different cuisine each night of the week at no extra cost.

They are the Al-Adin (oriental); Alfredo (Italian); Le Gourmet (French); Bali-Hai (Polynesian); The Dhow (fish); Karibuni (BBQd meat and popular local dishes) and Panorama (international) - all with relevant decor.

The Panorama is surrounded by a man-made lagoon along which are palm-dotted islands which you can hire for your own exclusive use.

The hotel is situated on one of the most beautiful beaches in Kenya just 30 kms south of Mombasa Island. It offers over 300 metres of glistening white-sand beach which is cleaned daily.

There are two swimming pools while aqua sports are in the expert hands of the "The Crab", the Coast's most well equipped diving and water sports centre which has bi-lingual P.A.D.I. instructors attached to its diving school.

Windsurfing is also offered.

There are two tennis courts, air conditioned squash court, archery range, bocce lanes and "mini" golf.

There is also canoeing along the 300 metre man-made free from lagoon.

From the hotel one can also go deep sea fishing, sailing or even camel riding along the beach.

This eight-year-old hotel recently extended and now offers 604 beds which also include Presidential, Executive, Studio and Family suites.

All are beautifully and attractively furnished and the new furniture is spectacular with "way out" designs and colours, as well as unique lampshades and furnishings.

Conference facilities are available for over 300 people, while the hotel's air-conditioned Discoingoma has been totally re-equipped with the latest sound and lighting effects.

There are five bars and comfortable lounges. A casino, as well as an open-air amphitheatre for live entertainment and concerts, are planned.

The Al-Adin restaurant, in a Bedouin-like tent with ornate drapings, fountain and crystal chandeliers, was the creation of one of the world's top interior designers, Geoffrey Dowling, from London whose work has embraced palaces and private



Samburu Lodge Proves A Big Draw For Sight-Seers ...

Completing the Serena 'package' are the Group's lodges situated in three of Kenya's best known game parks which are also undergoing extensive renovation programmes.

The newest of these is Samburu Serena Lodge which was acquired in 1987.

The lodge which comprises 44 cottages and eight luxury suites is situated on the uaso Nyiro river in Samburu game reserve, which is famed for its crocodiles, Grevy Zebra, reticulated giraffe, oryx and gerenuk. Leopard sightings are also more frequent than in other parks. The reserve continues to gain in popularity and tourism experts are referring to it as "the Tsavo of the 1990s".

Balloon safaris from the lodge give guests a bird's-eye view of the game and are followed by a champagne breakfast in the bush.

The good sized swimming pool and sun deck gives guests an opportunity to enjoy the fine weather prevalent in this area.

Amboseli Serena Lodge continues to be the Group's most popular unit, with recently added conference facilities which enable tourists to meet in

unique surroundings against the dramatic backdrop of Mount Kilimanjaro.

Up to 100 conferencegoers can be accommodated in the room which is fully equipped with overhead projectors, T.V. video systems, P.A. and convention equipment.

The lodge also recently built its swimming pool to bring it into line with the other Serena units.

Mara Serena Lodge, like Amboseli, has been acclaimed by experts the world over for its unique architectural appearance, as it has been built to resemble two Masai manyattas.

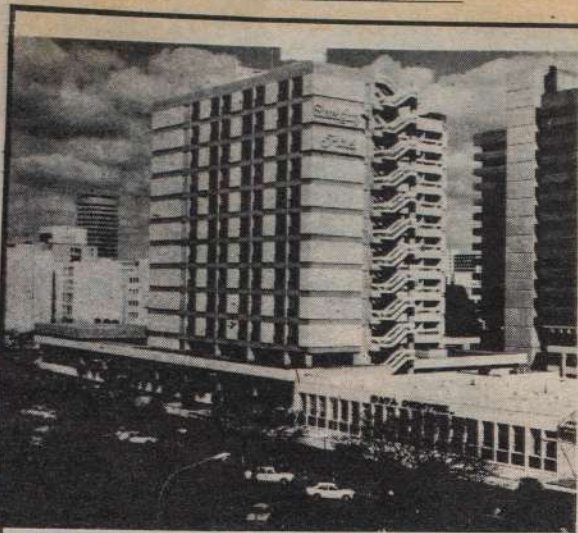
ANNUAL MIGRATION

From the lodge, set high on a ridge overlooking the grasslands and escarpments of the Masai Mara, the annual migration of wildebeeste and zebra can be seen, as well as black mane lions, rhino, elephant and hippos. Balloon safaris are also offered at Mara Serena, as well as an early morning game drive featuring a champagne breakfast beside the hippo pool, one of the park's most popular spots.

Smooth all the way. Embassy

KINGS

PISTER



The International Hotel in the heart of Nairobi



The Sixeighy offers international standards of service and proves that it does not have to cost the earth. There's a gourmet's choice of three restaurants, two bars and a coffee terrace to while away the time. All 340 double bedrooms have private baths, an automatic telephone system, hi-fi radio, piped music and 'Around the Clock' - 24 hour room service. Sixeighy Hotel is situated on the famous Jacaranda-lined, Kenyatta Avenue with the best shopping facilities in Nairobi.

for local and overseas bookings write to:

The General Manager, Sixeighy Hotel,
P.O. Box 43436, Nairobi.
Telephone: 332680



LEOPARD BEACH HOTEL

ARADEL KENYA LTD.,
P.O. Box 34, UKUNDA,
KENYA.

TEL: DIANI 2111/2721
FAX: 2113
CABLE: ORCHID
TELEX 21169 LEHOTEL

- * CHUI GRILL OPEN EVERY EVENING
- * BELLVUE CAFE
- * NON-STOP ROOM SERVICE
- * MINI BAR IN ALL THE ROOMS
- * FLOOD LIGHT TENNIS COURT
- * FOOTBALL GROUND
- * TABLE TENNIS
- * OPEN AIR DISCO
- * WINDSURFING
- * VOLLEYBALL
- * HOUSE DOCTOR ON 24 HOURS CALL
- * FUNCTIONS HALL/T.V. ROOM AND FILM

The Leopard Beach Hotel is a first class international hotel situated 35 Kilometres south of Mombasa on the famous sandy beach of Diani on the Indian Ocean.

As one approaches the hotel he is greeted by the well kept rows of Bourganvillea which also creates a beautiful scenery from the balcony of the hotel guest rooms. The building are of African architecture with international comfort. The 160 hotel rooms are fitted with wall to wall carpet, radio with two channels of music, mini

bar and a balcony opening to the beautiful, flowery garden.

The highly demanded cottages and suites all open to the sea are fitted with coloured television sets and video in English, Italian and German films.

The kitchen offers the best international cuisine characterized with Italian specialities.

The animation program include football, flood light tennis courts, water sports, volleyball, table tennis and daily open air disco.

Enjoy the value of your money with friends-
AT THE LEOPARD BEACH HOTEL



SAMBURU SMILE - A young mother from Marsabit.

"Jambo, Salaama Nyingi Sana ..."

"JAMBO; Salama Nyingi Sana", from International Gems Limited of Standard Street, Nairobi.

Being in the Gold and Jewellery business since 40 years, there is a lot of experience that has been gathered over these years.

The 35 workforce have been trained in the Jewellery art and are first class artisan, therefore the client can have beautiful custom designed jewellery according to ones personal taste within the shortest span of time.

Regarding the precious Gem stones, the advantages here are the client can see first hand the process a Gem stone would take from the rough to the selling; for example a rough Tanzanite is first shaped then polished and finally heated to enhance the typical sapphire blue colour.

All this is very fascinating to watch. Here our three specialist Gem stone cutters are all the more willing to help the client with any queries he or she may have.

More in the Gold ready jewellery the client has a variety of 18K or 14K Africa maps, the Masai lady charm is a speciality - a precise replica of the ones in the famous Masai Mara and the Amboseli Game Parks. Also a hot favourite is the Akamba bracelet or commonly known as the 'Elephant Hair' bracelet.

This can be worn by the

Akamba people and the Masai.

The real ones are either made from Giraffe hair or copper wire, but at the jewellery store the client is offered replicas beautifully designed in 18K gold or silver.

The client can take home the beauty of the Kenya wild game; Elephant, Lion, Leopard charm pendants all done beautifully in 18K gold.

LAPIS LAZULI

Also the gifts the client is exposed to are in fascinating green, blue, and brown colours of Malachite, Lapis Lazuli and Tiger eye necklaces, bangles and charms.

To sum up International Gems is the store where the client's African Safari mood and adventure is further enhanced by seeing real life replicas of the wildlife in beautiful 18K and 14K Gold designs as gifts and souvenirs from Kenya.

Also not forgetting the fascination and beauty of the precious and semi-precious Gem stones like Ruby, Tanzanite, Tsavorite mined directly from the National Parks.

"Karibuni" So all are very welcome; "Wenn sie in Kenya sind" International Gems; "Au Kenya, demandez" International Gems; "Quando siete in Kenya chiedete per" International Gems; "En Kenya pregunte por" International Gems.

JACKY PARMAR IS IN LONDON TO MEET THE TOURIST TRADE

JACKY PARMAR is a Kenyan, educated in Kenya, where he attained a Diploma in Accounts, Commerce and Economics.

In 1973, formed a limited company of Big Five Tours and Safaris, and since then Jacky has gone a long way in improving this company. He has handled several groups from all over the world through this company.

In 1978, he opened an office in Mombasa. Big Five specialises in F.I.T. and Group Tours and Safaris.

He travels regularly abroad to many destinations to meet new and old Agents which also makes him well informed of developments in Tourism.

Now and again, he also visits lodges, camps, beach hotels and other Organisations in order to have first hand information on Tourism in Kenya. He will be attending World Travel Market for the fourth time.

He has organised Big Five to be a member of American Society of Travel Agents, Kenya



JACKIE PARMAR

Association of Tour Operators and African Travel Association.

The company has a fleet of Microbuses and self drive cars in Nairobi and Mombasa.

Jacky Parmar wishes to establish long-term permanent working relationship with the U.K. Travel/Tour operators which could be most beneficial to both the parties concerned.

KENYA — LAND OF CONTRASTS

Nairobi: Within a 15-minute drive from the city centre and only eight km. away is the top attraction of the Kenyan capital, the 115 sq. km. unspoilt bush teeming with wildlife. The unfenced southern side lets in animals from the rolling Athi Plains and wildebeeste, kongoni, gazelle and many smaller species. Monkeys are a constant source of amusement. Tourists are frequently thrilled by lion, leopard and cheetah on the kill and later enjoying the feast. Viewing game with a backdrop of skyscrapers is an enthralling experience. At the Park's main gate is the Animal Orphanage to nurse sick or abandoned animals and now a popular viewing centre.

Aberdare: Part of cool, forested and hilly Kenya, this 790 sq. km. park has sub-Alpine vegetation and a profusion of game. This mountain moorland has special floral interest and is a sanctuary for elephant, buffalo and rhino. The shy wildlife mostly comes out at night, and a couple of well known lodges, the world famous Treetops and the architectural wonder, The Ark, have been built in this park for visitors to wine and dine in luxury and view the animals after dark at a water-hole to which they are attracted with man-made salt-licks. The viewing arenas near these lodges are floodlit and now the big game is accustomed to the light and the salt, providing an unforgettable experience of forest night life.

Lake Nakuru: "The greatest bird spectacle in the world" is how a famous ornithologist described this home of the Lesser Flamingoes which breed in the shallow alkaline or 'soda' waters of this picturesque lake in the Rift Valley. In this 50 sq. km. area can be found up to two million flamingoes, but at least a few hundred thousand at all times of the year. There are 400 other species of birds including pelicans, spoonbills and the statuesque saddle-billed stork. In the surrounding park can be seen Colobus monkey, waterbuck, bushbuck, impala and a rare species—the reedbuck. The overwhelming experience, however, is the tidal wave of various hues of pink flamingoes rising gracefully into the blue sky.

Mombasa the historic Arab town, has attracted travellers since the Greek times. Named 'The Island of War' by the Arabs, it has a quaint atmosphere in the narrow streets of the Old Town and old harbour to which sailing dhows from the Arabian Gulf still come annually. The modern urban complex has two huge elephant tusks spanning the main road, next to the Uhuru Fountain. Pink-walled Fort Jesus built in 1593 by the Portuguese and scene of many a bloody battle between them and the Arabs, is now a museum. White Hindu temples, the bustling Mwembe Tayari market, the modern harbour at Kilindini, the Wakamba woodcarver's centre and bright sun-silver sand and clear sea are its main attractions apart from the friendliness of the Coast people.

Malindi is a modern seaside resort with silver and

golden sands, crystal clear sea and sparkling sun. Its luxurious hotels offer top-class accommodation for bathing, goggling, sailing, water skiing, deep-sea fishing and relaxing a-la French Riviera. It has historic links with the past, like the Vasco Da Gama Pillar built by the explorer in 1498 to mark his visit to the bustling Arab town which gave him a Hindu guide to discover the sea route to India.

Lamu is a haven for the recluse from civilisation and is perhaps the last unspoilt town on the coast. Its streets were originally built for camels to pass through so the town has no roads for vehicles. The overhanging houses with their exquisitely carved wooden doors in narrow alleys give it an Arabian Nights atmosphere as the men go about in their long white Arab gowns and the women in black veils and cloaks. Exceptionally beautiful pieces of craftsmanship are displayed in the museum, with a dhows galley. There are elegant mosques and a lively seafont.

Gedi has become part of the new tourism complex at Watamu with its beach hotels and marine national park. It is a ruined town of the 13th Century, mysteriously deserted during the 17th Century and rediscovered in 1920. Its Great Mosque with 17 columns, the Sultan's Palace, prison, a giant pillar tomb and houses, point to a once-prosperous habitation. Chinaware from the Ming Dynasty, glass from Persia and cornelian beads from India have been found and are displayed at the Gedi museum.

Meru: Home of the rare white rhino, this park offers a variety of vegetation ranging from tropical rain forest to open savannah and rivers, springs and swamps in its 870 sq. km. In addition to the big game, the park offers fishing facilities and bird shooting in certain areas. **Born Free** lioness Elsa was brought by Joy and George Adamson to return to the wild in this park because it is the least crowded and visited. With a recently opened lodge, it is becoming more popular and is the best place to see the lesser kudu dubbed as "the Apollo of the antelopes". The white rhino still remains the top attraction here and to see it being herded like domestic cattle as it is so placid, unlike its "black" cousin, is a memorable experience.

Nyeri lies on the slopes of Mount Kenya, believed by the Kikuyu people to be the home of the gods. Lush green vegetation, well tended farms and smooth tarmac roads make it a very pleasant 160km. journey from Nairobi. It is the starting point for a trip to the world famous Treetops and The Ark. Lord Baden Powell is buried here and Scouts from all over the world come to pay tribute to the founder of their movement.

Mt. Elgon Covering some 130 sq. km. of the mountain astride the Kenya-Uganda border, this park lies at an altitude between 2500m. and 4250m. offering typical Alpine vegetation with large populations of big game on the lower slopes



TSAVO RIVER crocodile.

PHOTO — AKRAM SHEKH

Herds of elephant, buffalo and eland roam the forests and provide pleasant game viewing for the visitor.

Shimba Hills 40 km. south of Mombasa, here is the only place to see the rare sable antelope. Several herds of roan antelope, brought to this reserve from elsewhere in Kenya where their survival was endangered, can also be seen. In the fine forests of huge trees can be seen both big and small game and even a slithering python along with teeming bird life overhead. From Giriama Point and other lookout sites magnificent views of the coast and surrounding countryside can be enjoyed.

Mount Kenya: At 3,200 metre this is the country's highest peak. The twin snow peaks of Batian (5,686 metres) and Nelion (5,674 metres) provide a rugged challenge to Alpine climbers. Point Lenana and other smaller peaks are accessible to amateur climbers. Some tracks are motorable to a point but mule-safaris are the order of the day for the lower slopes, clothed with magnificent forests of pencil cedar, camphor and podocarpus trees. The mountain slopes have giant lobelia and

groundsel cacti with multicoloured flowers. The rivers provide excellent sport for fishermen.

Tsavo: The biggest of all parks, and even bigger than some countries. Tsavo is the greatest game sanctuary of East Africa, covering 20,800 sq. km. It is well-known for its wonderful variety of wildlife

and scenery. The largest surviving herds of elephants in the world roam here freely. Numbering over 20,000 at times, it is possible to see hundreds of elephants in a day's drive through this park. There are several thousand rhinos and innumerable plains game. The Nairobi-Mombasa Highway divides the park into a western and eastern section. It has well-equipped comfortable game lodges for food and accommodation. The vast horizons and rugged terrain made Tsavo the location of filming Walt Disney's *The African Lion*. Bathing elephant herds can be safely seen through glass observation panels into the palm-shaded pools of Mama Springs, along with hippo, crocodile and tropical fish.

Watamu and Malindi: Two national parks for observing underwater fish and other marine life. Visitors hire glass-bottomed boats equipped with snorkels, goggles and flippers for exploring the wonderlands of coral and colourful marine life. Situated near luxury beach hotels, these parks offer swimming, water sports and sunbathing.

The Great Rift Valley: is seven times bigger than the Grand Canyon of USA and stretches for hundreds of miles from Malawi to the Middle East. Nowhere is it so clearly defined, beautiful and breathtaking as in Kenya. The sheer drop of the Escarpment, about 45 km. from Nairobi, is awesome with its panoramic vistas of the valley below and the volcanic Mount Longonot straddling it. Longonot is a day's climb to the crater rim where geothermal steam jets out and game may be spotted.

Lake Naivasha is situated about 80 km. on the Nairobi/Nakuru road in the Great Rift valley. With more than 300 varieties of birds and excellent fishing for tilapia and bass, it is scenic picnic spot. On the papyrus fringed lakeside have developed comfortable and pleasant hotels and boating clubs. Boats can be hired for a trip to Crescent Island, a game and bird sanctuary in the lake. Only five km. beyond it is Hell's Gate gorge with its hot water springs and an unusual cliff known as the Statue of the Devil.

Lake Turkana has been termed as "the jade set in black, purple and blood red lava" because of its mysterious, almost lunar landscape. Formerly called Lake Rudolf, it is reached after a tough journey by road or by a short flight in a light plane. Boating, big game fishing and bird watching are the top attractions of this area. The Turkana people with their unchanged lifestyle for many thousands of years, never fail to impress the visitors.

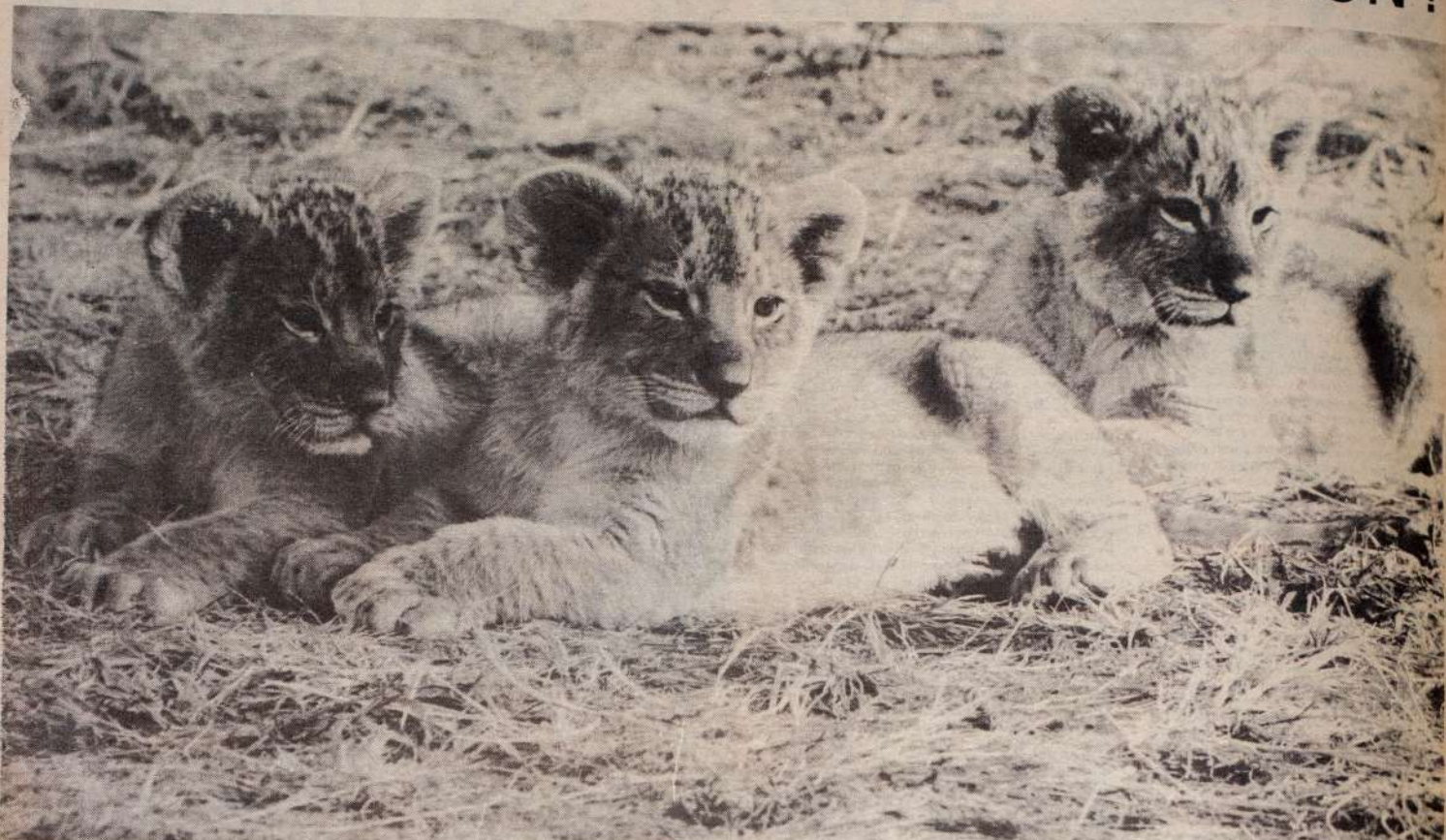
natural extracts
for a deep, tropical tan




Jamaica

SUN COSMETICS

WILDLIFE — STILL A MAJOR ATTRACTION!



THREE YOUNG LIONS bask in the sun while awaiting the return of a hunting pride in Kenya's world-famous Amboseli National Game Park.

PHOTO — KANWARLAL SABHARWAL



Go with
VACATIONAL
VACATIONAL TOURS & TRAVEL LTD.

..at a price you can afford!

P.O. Box 44401, Nairobi, Kenya.
Telex: 25002 V.T.T.L. Fax: 727283.
Kenya Avenue Branch Tel: 23312, 29942,
332735.
Hilton Hotel Branch Tel: 24885, 337392,
330230.
(After office hours Tel: 760244.)

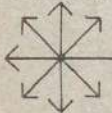
- Car Hire
- Hotels & Lodges Bookings
- Air Travel Ticketing



INDIANA BEACH APARTMENTS LTD.

TELEPHONES:	TELEX:
P.O. BOX 82662	BAMBURI: 485895/6
MOMBASA-KENYA	MOMBASA; 25928/24067
	INDANA 21425

ENJOY A HOLIDAY IN KENYA AT ECONOMIC RATES WITH



Farways

SAFARICENTRE LIMITED

GATEWAY TO AN AFRICAN ADVENTURE SAFARI

BOOKING OFFICE:
Opp. Castle Hotel, Moi Avenue
P.O. Box 87815,
Tel: (01) 23307/9,
Tel: (Res) 491320/490690
Telex: 21015 FARWAYS
Fax: 314408 FARWAYS
MOMBASA, Kenya

HEAD OFFICE: Mombasa — Kenya
BRANCHES:
Nairobi, Malindi and Lamu — Kenya
Arusha — Tanzania

**OUR BEST
SELLER
LAMU**

Regular Safari Departures:
Bus / Air / Economic Camping
and Romantic Dhow Safaris

SPECIALISTS IN
INCENTIVE GROUPS
TANZANIA SAFARIS
& MT. KILIMANJARO
CLIMBING EXPEDITIONS

KENYA: ALL OF AFRICA IN ONE COUNTRY

TRAVEL AGENTS ACCOMMODATION BUREAU

GROUP DISCOUNTS OFFERED

CAR HIRE
WIDE RANGE OF VEHICLES &
BEACH BUGGIES AVAILABLE

FARWAYS SAFARI CENTRE NOW INCLUDE TRAVEL IN TANZANIA

FARWAYS Safaricentre Limited, a young and upcoming company has spread its wings to all over Kenya and part of Tanzania within a very short time, with their head office in Mombasa and branches in Nairobi, Malindi and Lamu in Kenya and Arusha in Tanzania.

Its handling of groups, especially Incentive has proved very efficient more so, because of their personalised services.

The very ideally situated booking office opposite the Castle Hotel, Moi Avenue, Mombasa (the focal point of the tourist trade) is very popular for the individual traveller, and are well equipped to handle your requirements for safaris, tours, special group tours etc., for business or pleasure, nationally or internationally.

Lamu has become the company's bestseller due to the immense increase of the volume of visitors visiting Lamu, better known as "Paradise of Kenya" or "Lost Paradise found" as dubbed by a writer recently in the European media.

Since Farways Safaricentre Limited is able to organise accommodation not only in the three hotels in Lamu, but also "Private Houses" (large old houses converted into hotel type accommodation for individuals as well as families and groups) which costs so much less than the hotels which are far too expensive, Lamu has become the best seller.

As a result, even other Tour operators and Travel Agents find it easier to organise their Lamu trips for their clients through Farways Safari-centre Limited.

The company can offer you tailor-made safaris by Air, or by road both in Kenya and Tanzania along with combination holidays to track the Gorillas in Zaire.

Apart from the common safaris to Tsavo, Amboseli, Masai Mara, Lake Nakuru and Bogoria, with accommodation in luxurious lodges, Farways Safaricentre Limited also runs camping safaris in the same parks, the only difference being the accommodation which would be tents instead of lodges and of course in the price element, camping being a lot cheaper than the normal luxury safari.

Farways Safaricentre is well known for opening new areas

to visitors and for their particular care and attention to detail when planning your safari.

Their car hire department, apart from the normal range of vehicles (Charade, Toyota, Mazda, Nissan, Peugeot, 205, 504, 505, 4wd Suzuki, Trooper, Pajero, Mercedes Benz and safari minibuses), has recently acquired a fleet of Vauxhall B.T.V. Beach buggies.

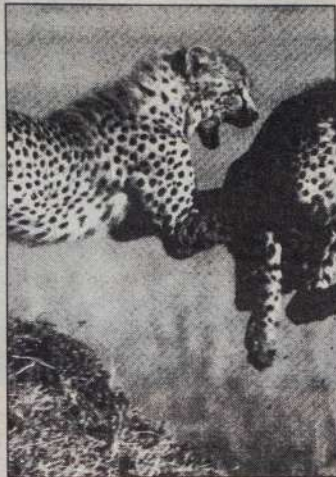
After the discontinuation of the Morris mini mokes and the

Fiat "Maridadi", these vehicles with a carrying capacity of seven passengers are the only original beach buggies in Mombasa and Malindi now available on hire from Farways Safaricentre Limited.

These Beach Buggies are much bigger and stronger than the mini mokes and therefore are not only meant for fun on the beach but can also travel on any normal road as do other small saloon cars.



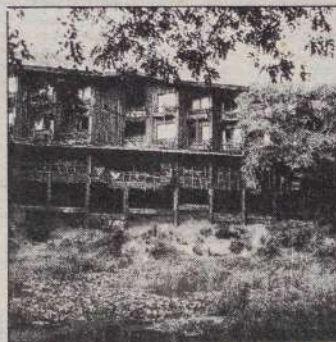
SOUND SELECTION of 'hire vehicles' available from Farways Safaricentre, Nairobi.



"No-one shows you Kenya like U.T.C. ...and me"



"I know what you want to know... about the gameparks, the wildlife, the people and traditions of Kenya."
 "I know how to get you there... safely and expertly driven in one of UTC's specially built vehicles."
 "I can get you close... close enough for the very best photos you dream of taking."
 "I know what you want to see... I can find it, and show it to you!"
 And best of all, I enjoy doing it... with you.



Skyland Air Safari Experts

SKYLAND Safaris Limited is one of East Africa's leading Air Safari specialists. A spokesman told COASTWEEK:

"Our vast knowledge of East Africa together with our creative ability in putting together unique programmes catering for the personal attention every client deserves.

"It is apparent that today's discerning traveller expects a service which can be tailored to their individual needs.

"Skyland Safaris has designed safaris to anticipate the requirement of all our clients' needs, which combines the highest standards of service which make our safaris Exclusive and so very Special.

"Our Air Safaris are operated by our sister company RDN charters, the oldest and leading Air Charter Company based on the Kenyan Coast with operations extending to Nairobi and Tanzania.

"Through this cooperation, we can assure a fully comprehensive service which anticipates every client's requirements before, during and after the Air Safari itself.

"Try us out. We really are so very special."

UTC

Kenya's Leading Tour Operators

<p>U.S.A. AND CANADA United Touring International (USA) Inc 1215 Walnut St. Suite # 808 PHILADELPHIA, PA 19107 United States of America Telephone: 800 228-6486 (USA & Canada) Telex: 173207 Teletel: 215-985-1000</p>	<p>EUROPE United Touring International Limited Parkmount House 14/15 Ardenway Road Colindale, London NW9 5SL England, U.K. (01-304 1000) Telex: 267227 Teletel: 011-306-1340</p>	<p>AFRICA United Touring Company Ltd Mwangi Mwangi/Kaunda Streets P.O. Box 42195 NAIROBI Kenya Telephone: 01-331950 Telex: 22228 UTC International Bookings: Telex 25870 SAFTRAK Telex: 125331022</p>
---	---	--



Bookings through
Kuoni
Redwing
Martin Rooks
Hayes & Jarvis
Somak Travel
or Book Direct

- ZANZIBAR TERRACE
- JASHO GYMNASIUM
- CONFERENCE FACILITIES
- SQUASH COURTS
- BREAKERS NIGHT CLUB
- WATER SPORTS
- GALAXY CHINESE RESTAURANT
- MCHANA SNACK BAR

BAMBURI BEACH HOTEL



Telephone: 485611/8 P.O. Box 83966 MOMBASA KENYA
TELEX: 21181 BAMBCHTL

EYECATCHERS

WHITE ROSE VILLAS



WHITE ROSE VILLAS

A MEMORY FOR THE REST OF YOUR LIFE

Escape to the white sands and clear water of Diani Beach. Enjoy the sea sports or just have a dip in the private pool. Retire to your self-contained villa to watch dusk fall and see the coco palms sway with the gentle sea breeze.

Let this holiday be a memory for the rest of your life.

WHITE ROSE VILLAS

Diani Beach, South Coast, Mombasa

For reservations and enquiries
Tel: 29898/27724 Fax: 727805
P.O. Box 42200, Nairobi, Kenya.
Tel: 20624
P.O. Box 83017, Mombasa, KENYA.

ARCHER'S

For Your Exclusive Safari...

- ★ Air Safaris
- ★ Photographic Safaris
- ★ Incentive Tours
- ★ Luxury Camping Holidays
- ★ Combination East African Safaris
- ★ Chauffer driven and self drive vehicles.
- ★ Air Charters and International Air Travel.



Archer's have looked after visitors to East Africa for over 35 years, let them suggest your exclusive itinerary — in Kenya, Tanzania, Zaire and Seychelles.

TOURS: TEL. 23131, 331825 TRAVEL: TEL. 26926, 22871
TELEX: 22082 FAX: 340182 P.O. BOX 40097, NAIROBI - KENYA
Archer's Tours and Travels Limited are members of
KATA, KATO, UFTAA and IATA.



Eagle Aviation
Ltd.

P.O. BOX 93926 MOMBASA, KENYA.

**WE OFFER HIGH QUALITY
INCLUSIVE AIR SAFARIS
AND
DAILY SCHEDULED SERVICES**

**AIR SAFARIS TO:
AMBOSELI, MASAI MARA
AND TAITA HILLS**
**DAILY SERVICES TO:
LAMU**

CALL US ON:

MOMBASA

010-254-11-316055

010-254-11-316054 FAX

MALINDI

010-254-123-21258

010-254-123-21099 FAX

LAMU

010-254-121-3119

010-254-121-3119 FAX

OR WRITE TO US ON:

**P.O. BOX 93926 MOMBASA, KENYA FOR
FREE BROCHURES**

Take advantage of our professional service

Make *Eagle Aviation*

YOUR NO.1 CHOICE!!

Kenya is an Independent Republic within the Commonwealth, a member of the United Nations Organisation of African Unity. It covers 585,000 square kilometres and lies astride the Equator bordering Somalia to the north-west, Uganda to the west and Tanzania to the south. The population is about 20 million. The capital is Nairobi with a population of about one million. Other major towns include Mombasa (pop; about 420,000), Kisumu (pop; about 420,000), Nakuru, Meru, Eldoret.

HELPFUL ADVICE TO VISITORS FROM 'KENYA AIRWAYS':

It's So Easy To Feel At Home In Lovely Kenya

be changed for foreign currency at banks at the two international airports which maintain a 24-hour service.

Nairobi and Moi in Mombasa. Scheduled services from all major cities worldwide.

CREDIT CARDS:

American Express, Diners Club, Visa and other well known cards are widely accepted in Nairobi and throughout Kenya.

DUTY FREE GOODS:

Visitors are restricted to duty free items of 200 cigarettes or 50 cigars and one litre bottle of spirits.

HEALTH ADVICE:

Certificates of inoculation against Yellow Fever and Cholera are advisable though not mandatory, except in some instances as, for example, arrival from the Far East (Cholera) and Central America, South, Central and West Africa (Yellow Fever)

Malaria is endemic to certain areas of Kenya and all visitors should begin taking anti-malaria prophylactics two weeks before leaving for Kenya, throughout their stay and for a minimum of three weeks after returning. Many towns have good hospital care and Nairobi has excellent specialist facilities.

There are chemists (drug stores) in all major centres but any visitors requiring special and continuing medication should bring sufficient to cover the duration of their visit.

LANGUAGE:

Kiswahili is the lingua franca, a phonetic language, formed out of Bantu and Arabic, and spoken nationwide. English is the official language.

AIRPORTS:

Kenya has two international airports: Jomo Kenyatta in

not leave valuables in hotel rooms and do not carry large sums of cash. If you have valuables, use a safe deposit box.

TELEPHONE AND TELEX:

Kenya has an excellent internal and external communications system. International STD has been installed and direct dialling on telex to most international centres is available on a 24-hour basis except where stated.

TIPPING:

Most hotels and restaurants include a service charge and tipping is not necessary except where exceptional service inspires a desire to show appreciation. However it is customary to tip for bar service (ten per cent)

LIQUOR AND SPIRITS:

Licensing hours are liberal. Local spirits and wines as well as imported brands are available. Beer is price controlled, wines and spirits are not. Kenyan beer is a frequent winner of international brewing awards for light lagers.



COLOURFUL TURKANA MAIDEN adorned with beads.

ENTRY FORMALITIES:

Valid passport and visas for everyone, with the exception of citizens of most Commonwealth and certain other countries with which Kenya has reciprocal waiver arrangements. The Commonwealth exceptions are Australia, Nigeria and Sri Lanka. Citizens of the United Kingdom of India, Bangladesh or Pakistani origin require visas as do all arrivals from South Africa.

CUSTOMS:

A reasonable volume of personal effects can be freely imported together with cameras and any amount of film. But be prepared to provide refundable deposits for the temporary importation of radios, tape-recorders, video and movie equipment. Banned imports are agricultural and horticultural produce and pets. Firearms can only be imported with a permit.

CURRENCY REGULATIONS:

No import or export of Kenya currency is allowed. Any amount of foreign currency may be brought in but must be changed at banks or licensed exchange facilities at main hotels and the exchange noted on a currency declaration form issued on arrival. Visitors should avoid 'street changers' and transact all currency dealings through official dealers. It is an offence to deface or damage Kenya currency.

Any surplus Kenya notes can

DEPARTURE TAX:

On departure from Kenya, an Airport Tax of U.S. Dollars 20.00 a person is payable in foreign currency.

SECURITY:

Kenya is a friendly country and well policed. Walking at night alone however is inadvisable. Preferably use taxis which are found outside most hotels. Do

WHILE MANY tourist hotels and lodges have always had wild game as their major attraction for overseas and local tourists, Turtle Bay Beach Hotel has developed a keen interest in marine tourism and a host of sea sports.

The hotel is strategically situated on the door of the fabulous Marine Park that covers the area from Malindi to the end of Mida Creek. It operates a well equipped diving school called 'Whale Shark Riders' run by professionals. The school opened in 1970 and is the oldest in Kenya. The school has a capacity for 30 divers and

attracts many groups from Europe as well as individual tourists. According to one of the instructors, diving in recent years has been attracting many local people.

The hotel's other major attraction which is gaining popularity from both foreign and local visitors is windsurfing. It also trains beginners in windsurfing, with a claim of being the 'best on the Kenya coast'. It also offers a guarantee that if the beginner does not learn within five hours, there is no payment for the training.

The hotel also promotes safaris to historical sites such as

Gede Ruins and caves. For snake lovers, the hotel organises safaris to the James Ashe snake park farm.

Facilities within the hotel include spacious dining rooms notably the Sinwaya Grill Room so named after the legendary original home of the Bantu situated 40kms north of Malindi. The hotel offers international cuisine. The Singwaya Grill Room on the beach specialises in delicious seafood.

The 252-bed hotel has a conference room which seats 100 people for pow-wows, 50 for private dinner parties and can cater for about 200 guests for

cocktail parties. An open fronted restaurant overlooks an attractive rocky and pond frequented by many exotic birds comprising 120 species identified around its environs.

The hotel's other facilities include the Suk - a large makuti-roofed shop selling toiletries as well as beach and safari clothes. Also on sale at the boutique are toys made by Riziki of Nairobi - a cottage industry which was started by two expatriate ladies to give employment to young women leaving prison. The young women are doing extremely well making lovely stuffed toys

SKYLAND SAFARIS LTD.

P. O. BOX 88153 MOMBASA, KENYA - TEL:- 432091 & 433211, TELEX:- 21482



East Africa's leading AirSafari specialist

RNDN AIR CHARTERS
ROY NDISI & CO. LTD.

P. O. BOX 88153 MOMBASA, KENYA - TEL:- 432091 & 433211, TELEX:- 21482

NEPTUNE CONCEPT CONTINUES TO EXPAND TOURIST TRAFFIC

Holiday Resorts Limited not only offer excellent accommodation, cuisine and service, but also beautiful tropical and sweet scented gardens both inside and outside their units.

Neptune Beach Hotel is on Kenya's north coast, while Neptune Village and Neptune Cottages are on the glittering white-sand, uncrowded and unspoiled Galu Beach just 40 kms south of Mombasa Island.

NEPTUNE VILLAGE

Such has been the popularity of this nearly two year old village that it recently extended due to an overwhelming demand for accommodation there which could not be met.

It has added 18 one-storeyed villas following the same African traditional rondavel style of architecture, but which are more spacious. The Village can now offer 334 beds.

All rooms, with balconies, are air-conditioned with telephone, radio/piped music, WC and shower and are attractively and comfortably furnished. Each villa has a solar panel for its own exclusive hot water supply.

The Village has a large "figure 8" swimming pool and there is no need to leave it for a drink for you can sit on a stool and enjoy one at the conveniently situated bar.

Surrounding it is a large sun-deck area, also "Afro" style makuti roofed bandas for dancing.

The tennis court is illuminated at night and looking after the water sports, including diving, is the very experienced Theo Vermeulen of Diani Diving and Safaris.

The main restaurant and lounge overlooking the beach are open-sided. International cuisine is offered and the chef is Swiss trained. Each week in the beautiful gardens there is a BBQ and "African Night" offering tasty local cuisine and music.

A Grill Room and Pizzeria have been added and there is also a hairdressing salon, massage parlour, boutique and curio shop.

Four well stocked bars are open 16 hours a day, and there is an Oasis Ice Cream Parlour for those active on the beach.

Entertainment, including dancing to a live band, takes place each night of the week.

Bicycles can be hired at Shs 20/- per hour, and the village also organises sightseeing tours of Mombasa and the Shimba Hills National Reserve, Kwale, where wildlife include elephant, giraffe, leopard and the rare sable antelope, as well as a great variety of birds. It has been described as a naturalists' and ornithologists' paradise.

NEPTUNE COTTAGES

The seven newly acquired

Neptune Cottages are on the beach not far from Neptune Village.

All are self-catering, well equipped, air conditioned and furnished, with spacious lounge, dining room and verandah surrounded by immaculate landscaped gardens.

A beach restaurant for meals and snacks, is open throughout the day, and there is also a bar and ice-cream parlour.

NEPTUNE BEACH HOTEL

The 160-bed Neptune Beach Hotel is about 15 minutes driving time away from historic Mombasa Island and situated on the doorstep of Kenya's latest Marine Park at Bamburi Beach.

It has a large circular swimming pool also facilities for water sports including windsurfing and sailing in catamarans. There are also glass-bottomed boats for reef viewing and snorkelling. The Barracuda Diving School is one of the best on the Kenya Coast and here you can learn to scuba dive if you wish. Arrangements can also be made for deep sea fishing.

Excellent tennis court are nearby which are floodlit at night.

From the First Floor restaurant there is a panoramic view of the sea. Table d'hote and a la carte menus are offered. The food is not only delicious, but plentiful. All public areas have been completely and tastefully re-furnished.

Entertainment includes a Resident Band, the "Afro Souvenirs", as well as traditional dancers and musicians, acrobats and snake shows. There are also TV and Video shows in German, English, French and Italian, as well as a variety of indoor games.

For late night dancing there is the intimate "Club Jade" discotheque, and for drinking there is a choice of three bars.

All rooms, with balconies, are spacious, attractively furnished and have telephones, piped music and radio, also a bath as well as a shower. They are air-conditioned and provided with mosquito nets and anti-mosquito sprays.

Hundreds of plants are both inside and outside the hotel their care being in the expert hands of the group's landscaper and consultant.

The reception area presents a wonderful display of Lamu-ese decorative wood sculpture, while all the receptionists have long flowing "Afro" style dresses as uniforms. Two Masai, sculpted from wood, guard the front entrance.

There is a bus service into town, the return fare of which is Shs 80/- and there is a lift serving each floor of this three-storeyed hotel.

Chairman of Holiday Resorts is Amin Merali, while its Managing

Director is, Najeeb Khan who, for 15 years was working for the Oberoi group which embraces 36 hotels worldwide.

Before coming to Kenya he was manager of a five-star Oberoi hotel in Saudi Arabia.

Corporate General Manager of Holiday Resorts is Patrick Mutus who, after graduating from a four year Hotel Management course at Kenya Utalii College, went to Germany for further training. He has worked at several top hotels in Kenya including Inter-Continental and Severin Sea Lodge. Patrick was with the Plaza at Bamburi Beach when it opened, then joining Neptune Beach Hotel as Front Office Manager and later becoming General Manager. In January, he was promoted to Corporate General Manager of the Holiday Resorts group.

The group's emphasis has been not only on growth, but on maintaining "quality" and giving good value for money.

The best seafood restaurant on the coast. Open to sea breezes while you dine and dance under the stars.

TAMARIND MOMBASA

NYALI, MOMBASA
PHONE 471747, 472263



A spectacular roast meat feast with the finest selection of venison, meats poultry. As much as you can eat.

CARNIVORE NAIROBI

LANGATA ROAD, NAIROBI
PHONE 501709, 501775/779



The only real seafood restaurant in town. And it's all flown in daily fresh from the coast. A meal to remember.

TAMARIND NAIROBI

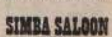
NATIONAL BANK BUILDING
HARAMBEE AVENUE, NAIROBI
PHONE 338959, 20475



Fun out-of-door atmosphere by night. Dancing Friday and Saturday. Live band Wednesday and Sunday. Informal family restaurant by day.

SIMBA SALOON NAIROBI

CARNIVORE, LANGATA ROAD
PHONE 501709, 501775/779



The most difficult choice you'll have to make

So why not try them all?



AFRICAN LOTUS TRAVELS LTD

P.O. Box 86031, Tel. Off: 312519/25503/25415 Digo Road Mombasa Kenya

"CONSERVE



Our National heritage"

• AIR • LAND • SEA • RAIL
Fast, Efficient, Punctual and Best Value for Money
... Always book your Tours, Travels, Safaris and
Excursions With The Experts ... We Are The Best!

PHOTOGRAPHIC & AIR SAFARIS



ATTRACTIVE swimming pool and lido area.

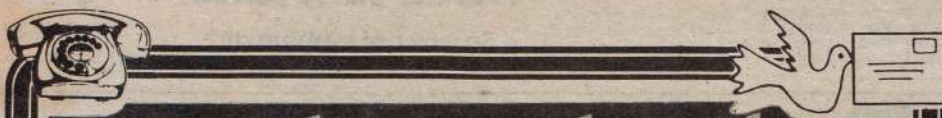


our services include:
 Deep Sea Fishing * Gogging * Glass Bottom * Wind Surfing
 Bus Hire * Car Hires * Excursions * Lodge/Hotel Bookings
 Tours and Safaris * Transfers * Air-Ticketing * Incentive Tours

HEAD OFFICE MOI AVENUE TEL: 20728/311182/311302 P.O. BOX 83451
 MOMBASA FAX 311302 BRANCHES DIANI TEL: 01261-2208/2006
 NAIROBI: 331253, 26354, TELEX 22420

GUPTAS The Safari People

CAR HIRE
TOURS AND SAFARIS



Reach out and touch
 someone...
 while in Kenya.



You'll probably be a thousand miles away from family, friends and business contacts back home. But you can reach out and touch them all. Thanks to Kenya Posts and Telecommunications Corporation's range of convenient international services.

The **International Dialling Service (IDS)**, for example, enables you to dial the globe. Direct. And what's more, collect telephone calls are available to the USA and U.A.E.

We don't stop there. We let you use valid credit cards issued by

telephone authorities back home and if you left them behind, you can buy our own phone cards at very reasonable rates.

You may not be staying long enough to rent a telex machine but our **Telex Bureau Service** will take care of your telex communications. And when you want to send whole documents abroad in a hurry, it's a matter of minutes with our facsimile machines.

Call the **international operator on 0196** for more details on how to keep in touch worldwide while in Kenya.

Kenya Posts & Telecommunications Corporation
 "Keeping you in touch Worldwide"



Tanning Tips From Jamaica Cosmetics Sun Safe Lotions!

WHY you tan: The beautiful bronze which persons with fair skin complexion try to obtain is the result of certain processes which occur in your skin when exposed to the sun.

In particular, tanning is due to the increase of the skin's melanin, which is produced by special cells under the influence of Ultraviolet rays.

Furthermore, it is precisely because the concentration of these cells varies from person to person that every complexion reacts differently to sun rays.

How you tan: The sun which gives a healthy and beautiful colour emits two kinds of rays both of which are active in tanning Ultraviolet rays A (UVA) and Ultraviolet rays B (UVB).

The A rays create the first tanning process, causing a slight reddening or even sunburn of the skin.

What you must do to protect your skin: Because of their drying properties, the Ultraviolet rays, and in particular the UVB, are harmful to the health of the skin, depriving it of vitality and elasticity.

Consequently your skin requires a sun preparation which not only allows tanning but, just as importantly protects your skin during the time it is exposed to the sun.

For this reason, we recommend that you use the product range Jamaica.

Jamaica is an entirely new concept in sun care products and was developed with the aim of achieving not only a deep tropical tan and lasting protection but also the cosmetic care of the skin.

Jamaica offers you a wide range (emulsions and oils) with high and low protection factors. Moreover you will have the assurance that you have chosen the right sun preparation for you. A preparation that gives you perfect tanning, perfect protection and perfect cosmetic care.

Ultra Sun Protection: Protection Factor 10. For those enjoying the sun... topless:

Made from coconut oil and plant extracts, Ultra Number 10 with double filter, assures the special care and attention which the sensitive area around the breast requires when exposed to long periods in the sun.

Ultra Sun Protection: Protection Factor 7. For sensitive skins and babies:

Certain coconut oil and natural plant extracts which effectively protect the face and body and promote a deep, long lasting tropical tan.

Dark Tanning Oil. Protection Factor 4. For all skin types:

Formulated from a special composition of coconut oil and rich plant extracts which assures complete cosmetic care of the face and body.

Protection Factor 4 gives a uniform deep and long lasting tropical tan.

Dark Tanning Lotion. Protection Factor 4. For all skin types:

A specially formulated lotion containing coconut oil, plant extracts and cocoa butter which assures complete cosmetic care of the face and body.

Protection Factor 4, gives a uniform, deep and long lasting tropical tan.

'Coco Milk' For That Long Lasting Tan

Coco Oil and Coco Milk. Protection Factor 1. For a long lasting tropical tan:

Formulated with coconut oil and a low protection factor, Coco Oil and Coco Milk are the ideal preparations to get and prolong a beautiful bronze tan.

Carrot Oil and Carrot Milk. Protection Factor 1. To preserve your tan:

Consisting basically of carrot extracts together with many other natural plant extracts and having a low protection factor, Carrot Oil and Carrot Milk offer ideal care of the skin for those who want to acquire a dark tan and to prolong it.

After Sun with Collagen. Cools and revitalises the skin. Allows prolonged exposure under the sun:

A special lotion for the care of the skin after exposure to the sun and sea.

Because of its special formula containing collagen, it assists the skin in maintaining its elasticity and allows prolonged sun bathing if applied frequently.

'Body Milk' With Elastin & Hydrobiol

Body Milk with Elastin:

A lotion for the care of the body which because of the Elastin and Hydrobiol it contains, preserves the elasticity of the skin and assists in preventing dryness and flaking due to prolonged sun bathing.



TWO OF THE MOST popular in the 'Jamaica' range of scientifically tested and processed tanning lotions incorporate coconut oil as an emollient base.

Super View Of Mt. Kilimanjaro

THE LURE of the wide open spaces and breathtaking views that Kenya has to offer in her animal kingdoms filled with abundant wildlife is luring more and more tourists here for that much sought after safari experience.

Kenya also offers lots of sunshine, fresh unpolluted air, a friendly people with hotels and lodges of a high standard.

Tourists from the United Kingdom are thrilled to find that one of their most popular traditional dishes - roast beef and yorkshire pudding is served at Kilimanjaro Safari Lodge in the middle of Amboseli National Park.

Visitors from Huddersfield described the yorkshire pudding as "absolutely perfect!"

MAJOR DEVELOPMENT

Kilimanjaro Safari Club is presently catering for an increasing number of long-stay guests from all over the world by planning a host of exciting safaris.

As well, major developments are taking place to make their lodges, tented camp and Inn more attractive and comfortable.

Kilimanjaro Safari Club covers Tsavo Inn, Tsavo Safari Camp, Amboseli and Kilimanjaro Safari Lodges, also Kimana nestling in the foothills of Mount Kilimanjaro - Africa's tallest mountain.

Tsavo Safari Camp is the only one to be situated in the 3,000sq miles Northern area of Tsavo East National Park - described as "one of the largest uninhabited areas remaining in Kenya."

Situated on a delightful fifty acres site on the banks of the Athi River it offers 60-Beds, some in family size tents, as well as a tiled swimming pool and air-strip conveniently sited outside its back door. The tents are extremely comfortable, each with its own spacious bathroom with hot and cold showers.

It is surrounded by a great variety of trees and plants and the area has been described as an Ornithologists' paradise with around 600 species having been seen. It has its own bird-check list for the rapidly increasing number of bird spotters who visit the camp.

Meanwhile, a favourite spot for a sundowner party is at the top of the Yatta Plateau just behind the camp from where on clear evenings there is a magnificent view over Africa including Mount Kilimanjaro.

Six four-wheel drive landrovers are based at the Camp to take guests for the game drives. It is a fantastic area for animals for those who have a little more time to spend looking for them. They include Giraffe, Buffalo, Oryx, Ostrich, Lesser Kudu - as well as the three cats, Lion, leopard and Cheetah.

One hour's drive away is the late David Sheldrick's 'Blind' at Nihalakana, reminiscent of a small fortress commanding incredibly breath taking views over the Northern area of Tsavo East. It has a permanent spring and the area is frequented by all varieties of animals and birds, particularly during the dry season. It is reached after an exciting drive up and along the top of the Yatta Plateau and then half-way down the other side.

OVERNIGHT STOP

Kilimanjaro Safari Club is planning to renovate and furnish the 'Blind'. With three double rooms and one single for small Safari Group it makes a fantastic overnight stop.

There are also plans to organise 'Fly Camp' safaris from Tsavo Safari Camp.

Already guests are being taken to the Tiva River where there is much game to see, as well as caves - one containing some ancient wall paintings.

Another is three kilometres

long and ten feet high. It has four feet of water permanently there making it possible to take a boat right through this cave.

Safari circuits are being planned to take in one or two nights at 'Fly Camps' on the Tiva River, and one at David Sheldrick's 'Blind', then back to Tsavo Safari Camp.

Fishing equipment is available at the camp which is managed by Lionel Nutter with 18 years experience in the Tourist Industry, who is exceedingly knowledgeable about all things in and around this area.

He is assisted by Catherine Horsey who has had considerable experience in the hotel and catering industry over the past 11 years, nearly half of which has been at this camp.

The food is delicious.

KSC took over Tsavo Safari Camp (formerly Cotter's Camp) in 1980. To reach it from Mito Andei a boatman rows you across the Athi River in a rubber dinghy.

For guests at the camp who wish to go to Amboseli National Park and avoid the long journey by road, flying safaris are being planned. It takes around 20 minutes from the camp's air strip to reach Amboseli where they can go on game drives and swim at any of the three lodges before returning to Tsavo Safari Camp late afternoon.

AMBOSeli PARK

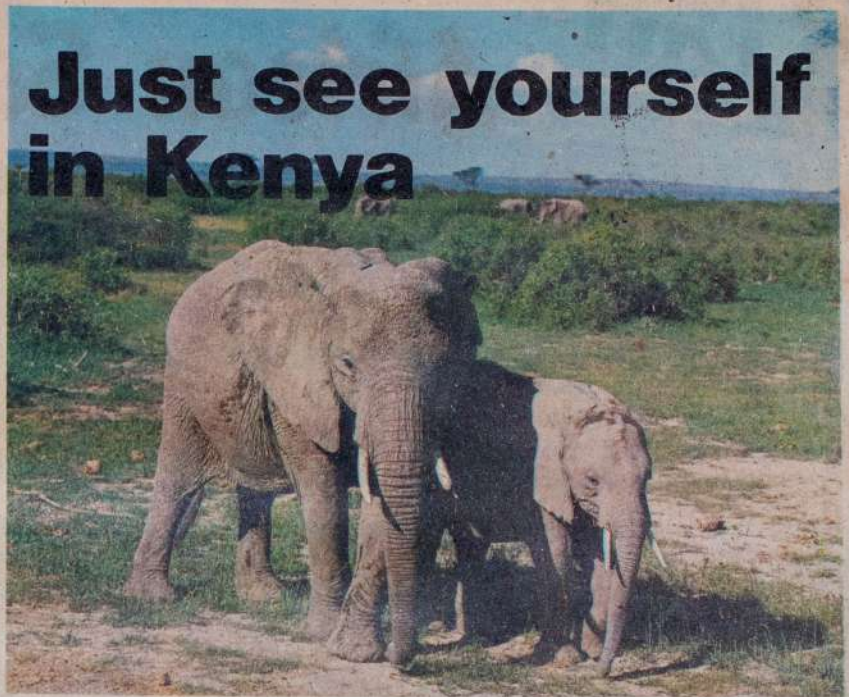
In Amboseli National Park, the KSC group have Kilimanjaro Safari and Amboseli Lodges. Located between Amboseli-Tsavo National Parks is the delightful Kimana Lodge - the nearest to Mount Kilimanjaro and a favourite writing spot of the famous novelist, Ernest Hemingway.

The flagship of the KSC group is the 212-bed Amboseli Lodge which it took over in 1968. It is situated in the Ol Tukai area of Amboseli National Park with a magnificent view of Mount Kilimanjaro. Just 800 metres away is the 120-bed Kilimanjaro Safari Lodge where guests are accommodated in cosy, attractive cabins.

Both lodges are situated virtually in the centre of this 150 square mile national park which is considered the easiest park in which to see the Big Five (Lion, Leopard, Elephant, Buffalo and Rhino) in the shortest space of time.

Considerable developments are taking place at Amboseli and Kilimanjaro Lodges which also includes the landscaping of their spacious gardens and the planting of over 600 trees.

Just see yourself in Kenya



With a little imagination and a quick, comfortable flight by Kenya Airways, you could leave uncertain climate - and enjoy for a while Kenya's wonderful heritage of wild life in sun-drenched game parks like Amboseli, Tsavo and Masai Mara.

Just imagine: a confrontation with herds of elephants, a pride of lions, the occasional rhino, cheetah or leopard and, don't worry, you will be safe and sound in your kombi bus and at night, either in a luxury game lodge or the unique tented camp ... equally luxurious.

For further information and reservations contact your nearest travel agent or Kenya Airways.

From Nairobi - the Gateway to Africa - we fly direct to Jeddah, Dubai, Bombay, Harare, Dares Salaam, Kigali, Bujumbura and the Seychelles, to mention just a few of our destinations. Or we can send you down to our tropical coastline resorts of Mombasa and Malindi, with miles and miles of Africa's finest beaches.

You may also like to note that Nairobi boasts the continent's finest hotels and the Kenyatta International Conference Centre, which hosts the world's top gatherings.

So we're back to business ... combined with the finest pleasure you can imagine.



Kenya Airways

The pride of Africa

KENYA AIRWAYS NEW AIRBUS IN SERVICE



KENYA AIRWAYS Airbus A310-300 seen in its finest livery on arrival at Nairobi's ultra-modern Jomo Kenyatta International Airport.

Your Tour Operator:

African Safari Club
 35, Thayer Street, London W1M 5LH
 Telephone: 01-486 45 95
 CAA ATOL 2313 / ABTA 94239

African Safari Club

Worldwide the largest Tour Operator for Holidays in Kenya.

Innumerable enthusiastic followers have almost made it their duty to spend their holidays year after year in Kenya. We call it "Kenya Fever". But this is not surprising: Hardly any other country on this earth can compete with Kenya, as far as beauty, variety and fascination are concerned. You will find well managed hotels, white sandy beaches, clear blue seas and friendly,

honest people. The game parks have become famous by films like "Born Free" and "Out of Africa". Many poets and writers have described their beauty. The unspoilt landscapes and vastness of the country will also captivate you. Here, in the tropical dream world, we are the experts. Our Kenyan experience guarantee maximum value of services.



FABULOUS BEACHES



BEAUTIFUL HOTELS



EXCELLENT FOOD



FRIENDLY SERVICE



EXOTIC WILDLIFE



ADVENTURE IN THE LAND CRUISER



MARA BUFFALO CAMP



THE KING OF THE WILDERNESS

CONSULTATION:

A successful holiday starts with adequate consultation. In order to guarantee an excellent relaxing holiday, we are pleased to consider your personal wishes. Our qualified staff know the country and the hotels from their own experience and they can tell you much more than can be gathered from the brochure.

ASA — African Safari Airways:

The Super DC-8/63 long-haul aircraft of ASA will fly you in approx. eight hours direct to Mombasa the sunny Coast of Kenya. The seating is comfortable, and for extra comfort we offer our 'Club Class'. The technical maintenance of the aircraft is carried out by SAS (Scandinavian Airline System). Also our pilots and our cabin crew are trained by SAS and undergo regular checks. Friendly flight attendants take care of you during the whole flight so that you will have a most enjoyable experience.

ASC HOTELS:

Our hotels are among the best in the country and exclusively reserved for guests of the African Safari Club. Our food is ample and famous for its variety and our staff members well-known for their hospitality and friendliness.

SAFARIS:

Emphasis is placed on attractive safari programmes. For instance our air and land cruiser safaris are carried out by the renowned company "Skytrail". During these safaris specially designed vehicles are used. The Mara Buffalo Camp, probably the most beautiful camp in the Masai Mara region with the biggest wildlife concentration, and the beautiful Masai Safari Lodge are exclusively reserved for our club members.

THE INDIAN OCEAN:

Professional skippers are introducing you into the secrets of deep sea fishing. The clear sea water is ideal during the diving season for scuba diving and goggling, and qualified diving instructors are pleased to show you the best diving places of Kenya. The crews of the ASC deep sea yachts will bring you to the most idyllic mooring places and provide a unique convivial atmosphere on board.

HEAD OFFICE:

Allschwil/Basel (Switzerland) Tel 061/63 77 77
 A.S.C. Austria: Salzburg Tel 0662/717 44
 A.S.C. (WEST) GERMANY:
 Stuttgart (Central booking office) 0711/22 15 17
 Duesseldorf 0211/36 06 32 Frankfurt 069/28 52 63